

Human ISG15/UCRP antibody

Catalog Number: ATGA0543

PRODUCT INFORMATION

Catalog number

ATGA0543

Clone No.

3E5

Product type

Monoclonal antibody

UnitProt No.

P05161

NCBI Accession No.

NP_005092

Alternative Names

Interferon-stimulated gene 15 kDa ubiquitin-like modifier, GIP2, uCRP,IFI15,ISG15,Interferon-stimulated gene, 15 kDa ubiquitin-like modifier, Interferon-stimulated gene,15 kDa ubiquitin-like modifier IFI 15, Interferon alpha inducible protein, Interferon induced 15 kDaprotein, Interferon induced 17 kDa protein, Interferon induced 17 kDa/15 kDa protein, InterferonStimulated Gene 15, Interferon stimulated protein 15 kDa, ISG 15, ISG15 ubiquitin like modifier,ubiquitin cross reactive protein precursor

Additional Information

This product was produced from tissue culture supernatant.

PRODUCT SPECIFICATION

Antibody Host

Mouse

Reacts With

Human

Concentration

1mg/ml (determined by BCA assay)

Formulation

Liquid in. Phosphate-Buffered Saline (pH 7.4) with 0.02% Sodium Azide, 10% glycerol

Immunogen

Recombinant human ISG15 (1-157aa) purified from E. coli

Isotype

IgG1 kappa

Purification Note

By protein-A affinity chromatography

Application

ELISA, WB, ICC/IF

Human ISG15/UCRP antibody

Catalog Number: ATGA0543

Usage

The antibody has been tested by ELISA, Western blot and ICC/IF analysis to assure specificity and reactivity. Since application varies, however, each investigation should be titrated by the reagent to obtain optimal results.

Storage

Can be stored at +2C to +8C for 1 week. For long term storage, aliquot and store at -20C to -80C. Avoid repeated freezing and thawing cycles.

BACKGROUND

Description

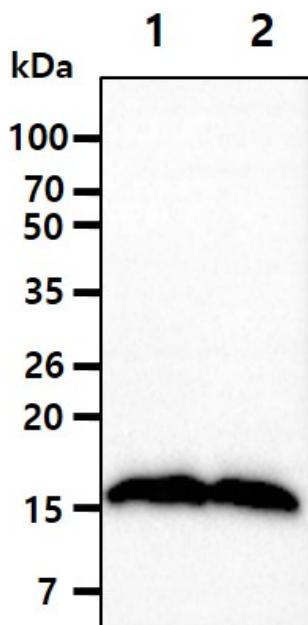
ISG15, a 15 kDa protein encoded by an interferon stimulated gene, and its modification system play important roles in the innate immune response, regulation of interferon signaling, pregnancy, and several cancers. ISG15 is an ubiquitin-like protein containing two ubiquitin homology domains and becomes conjugated to a variety of proteins when cells are treated with type I interferon or lipopolysaccharide.

General References

- Jonathan D et al.,(1996) Proc Natl Acad Sci USA 93:211-215.
- Weiming Y et al.,(2001) EMBO J 20(3):362-371.
- Chen Z et al.,(2005) Proc Natl Acad Sci USA 102(29):10200-10205.

DATA

Western blot analysis (WB)

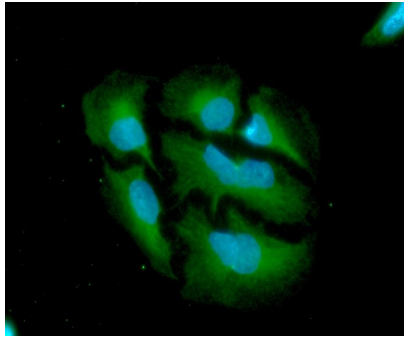


The cell lysates(40ug) were resolved by SDS-PAGE, transferred to PVDF membrane and probed with anti-human ISG15 antibody (1:1000). Proteins were visualized using a goat anti-mouse secondary antibody conjugated to HRP and an ECL detection system.
Lane 1.: MCF7 cell lysate
Lane 2.: PC3 cell lysate

Immunocytochemistry/Immunofluorescence (ICC/IF)

Human ISG15/UCRP antibody

Catalog Number: ATGA0543



ICC/IF analysis of ISG15 in HeLa cells. The cell was stained with ATGA0543 (1:100). The secondary antibody (green) was used Alexa Fluor 488. DAPI was stained the cell nucleus (blue).