

Human Cyclophilin B/PPIB antibody

Catalog Number: ATGA0545

PRODUCT INFORMATION

Catalog number

ATGA0545

Clone No.

k2E2

Product type

Monoclonal antibody

UnitProt No.

P23284

NCBI Accession No.

NP_000933

Alternative Names

Peptidyl-prolyl cis-trans isomerase B, Peptidylprolyl isomerase B, PPIase B, Cphn-2, Cyclophilin B, CYP-20b, CYPB, CYP-S1, OI9, Rotamase B, S-cyclophilin, SCYLP

Additional Information

This product was produced from tissue culture supernatant.

PRODUCT SPECIFICATION

Antibody Host

Mouse

Reacts With

Human

Concentration

1mg/ml (determined by BCA assay)

Formulation

Liquid in. Phosphate-Buffered Saline (pH 7.4) with 0.02% Sodium Azide, 10% glycerol

Immunogen

Recombinant human Cyclophilin B (26-216aa) purified from E. coli

Isotype

IgG1 kappa

Purification Note

By protein-G affinity chromatography

Application

ELISA, WB, ICC/IF

Usage

The antibody has been tested by ELISA, Western blot and ICC/IF analysis to assure specificity and reactivity.

Human Cyclophilin B/PPIB antibody

Catalog Number: ATGA0545

Since application varies, however, each investigation should be titrated by the reagent to obtain optimal results.

Storage

Can be stored at +2C to +8C for 1 week. For long term storage, aliquot and store at -20C to -80C. Avoid repeated freezing and thawing cycles.

BACKGROUND

Description

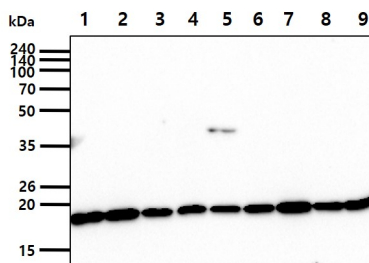
Cyclophilin B (also known as PPIB, peptidylpropyl isomerase B) is a cyclosporine-binding protein and is mainly located within the endoplasmic reticulum. It is associated with the secretory pathway and released in biological fluids. This protein can bind to cells derived from T- and B-lymphocytes, and may regulate cyclosporine A-mediated immunosuppression. Cyclophilin B is necessary for the prolactin-induced proliferation, cell growth, and the nuclear retrotransport of prolactin.

General References

- Watashi K, et al., (2005) Mol Cell 19(1):111-112.
- Yurchenko V, et al., (2001) Biochem Biophys Res Commun 288(4):786-788.
- E.Roydon P, et al., (1991) Proc Natl Acad Sci USA 88:1903-1907.

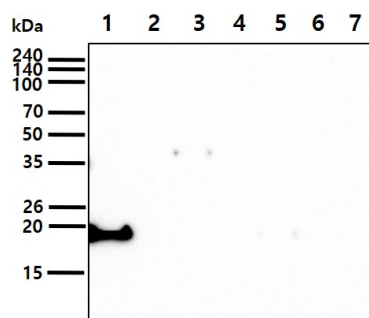
DATA

Western blot analysis (WB)



The cell lysates (40ug) were resolved by SDS-PAGE, transferred to PVDF membrane and probed with anti-human Cyclophilin B antibody (1:1000). Proteins were visualized using a goat anti-mouse secondary antibody conjugated to HRP and an ECL detection system.

- Lane 1.: HepG2 cell lysate
- Lane 2.: HeLa cell lysate
- Lane 3.: Jurkate cell lysate
- Lane 4.: K562 cell lysate
- Lane 5.: 293T cell lysate
- Lane 6.: A549 cell lysate
- Lane 7.: MCF7 cell lysate
- Lane 8.: sk-ov-3 cell lysate
- Lane 9.: LnCap cell lysate



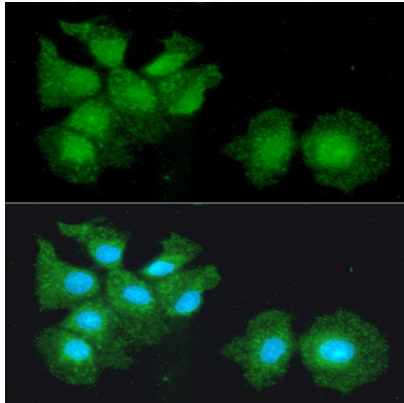
The Recombinant protein (50ng) were resolved by SDS-PAGE, transferred to PVDF membrane and probed with anti-human Cyclophilin B antibody (1:1000). Proteins were visualized using a goat anti-mouse secondary antibody conjugated to HRP and an ECL detection system.

- Lane 1.: Recombinant human PPIB Protein
- Lane 2.: Recombinant human PPIA Protein
- Lane 3.: Recombinant human PPID Protein
- Lane 4.: Recombinant human PPIE Protein
- Lane 5.: Recombinant human PPIF Protein
- Lane 6.: Recombinant human PPIG Protein
- Lane 7.: Recombinant human PPIH Protein

Human Cyclophilin B/PPIB antibody

Catalog Number: ATGA0545

Immunocytochemistry/Immunofluorescence (ICC/IF)



ICC/IF analysis of Cyclophilin B in Hep3B cells. The cell was stained with ATGA0545 (1:100). The secondary antibody (green) was used Alexa Fluor 488. DAPI was stained the cell nucleus (blue).