

Human STEAP1 antibody

Catalog Number: ATGA0551

PRODUCT INFORMATION

Catalog number

ATGA0551

Clone No.

J2D2

Product type

Monoclonal antibody

UnitProt No.

Q9UHE8

NCBI Accession No.

NP_036581

Alternative Names

six transmembrane epithelial antigen of the prostate 1, six transmembrane epithelial antigen of the prostate, PRSS24

Additional Information

This product was produced from tissue culture supernatant.

PRODUCT SPECIFICATION

Antibody Host

Mouse

Reacts With

Human

Concentration

1mg/ml (determined by BCA assay)

Formulation

Liquid in. Phosphate-Buffered Saline (pH 7.4) with 0.02% Sodium Azide, 10% glycerol

Immunogen

Recombinant human STEAP1 (1-70aa) purified from E. coli

Isotype

IgG2b kappa

Purification Note

By protein-A affinity chromatography

Application

ELISA, WB

Usage

The antibody has been tested by ELISA and Western blot analysis to assure specificity and reactivity. Since

Human STEAP1 antibody

Catalog Number: ATGA0551

application varies, however, each investigation should be titrated by the reagent to obtain optimal results.

Storage

Can be stored at +2C to +8C for 1 week. For long term storage, aliquot and store at -20C to -80C. Avoid repeated freezing and thawing cycles.

BACKGROUND

Description

Six-transmembrane epithelial antigen of the prostate (STEAP) is expressed predominantly in human prostatic tissue and in other common malignancies including prostate, bladder, colon, and ovarian carcinomas, and in Ewing's sarcoma, suggesting that it could function as an almost universal tumor antigen. Immunohistochemical analysis indicated STEAP-1 localization at cell-cell junctions of the secretory epithelium of prostate and prostate cancer cells. The favorable expression profiling of STEAP-1 in normal and cancer tissues suggested its potential use as a target for immunotherapy.

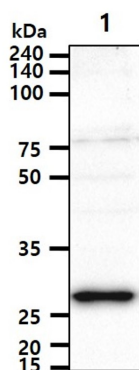
General References

David A. Rodeberg, et al. (2005) Clin Cancer Res. June 11(12): 4545-4552.

Pia M. Challita-Eid, et al., (2007) Cancer research June 67(12): 5798-5805.

DATA

Western blot analysis (WB)



The cell lysate (40 µg) was resolved by SDS-PAGE, transferred to PVDF membrane and probed with anti-human STEAP1 antibody (1:1000). Proteins were visualized using a goat anti-mouse secondary antibody conjugated to HRP and an ECL detection system.
Lane 1.: U87MG cell lysate