

Human IFN-beta 1/IFNB1 antibody

Catalog Number: ATGA0587

PRODUCT INFORMATION

Catalog number

ATGA0587

Clone No.

AT4F8

Product type

Monoclonal antibody

UnitProt No.

P01574

NCBI Accession No.

NP_002167

Alternative Names

Ifb, IFN-beta, IFNB, Interferon beta 1, Interferon beta, Fibroblast interferon

PRODUCT SPECIFICATION

Antibody Host

Mouse

Reacts With

Human

Concentration

1mg/ml (determined by BCA assay)

Formulation

Liquid in. Phosphate-Buffered Saline (pH 7.4) with 0.02% Sodium Azide, 10% glycerol

Immunogen

Recombinant human IFN-beta (22-187aa) purified from E. coli

Isotype

IgG1 kappa

Purification Note

By protein-A affinity chromatography

Application

ELISA, WB, ICC/IF

Usage

The antibody has been tested by ELISA, Western blot and ICC/IF analysis to assure specificity and reactivity. Since application varies, however, each investigation should be titrated by the reagent to obtain optimal results.

Storage

Human IFN-beta 1/IFNB1 antibody

Catalog Number: ATGA0587

Can be stored at +2C to +8C for 1 week. For long term storage, aliquot and store at -20C to -80C. Avoid repeated freezing and thawing cycles.

BACKGROUND

Description

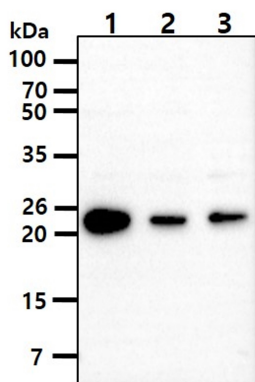
Interferon beta 1, also known as IFN-beta, is produced mainly by fibroblasts and some epithelial cell types. IFN-beta is involved in the regulation of unspecific humoral immune responses and immune responses against viral infections. It also increases the expression of HLA class I antigens and blocks the expression of HLA class II antigens stimulated by IFN-gamma. Interferon beta 1 can be used for topic treatment of condylomata acuminata. Some studies suggest that Interferon beta 1 tends to prevent disease activity in patients with multiple sclerosis

General References

Fierlbeck G, et al. (1992) *Hautarzt*. 43(1):16-21.
Panitch HS. (1992) *Drugs*. 44(6):946-62.

DATA

Western blot analysis (WB)



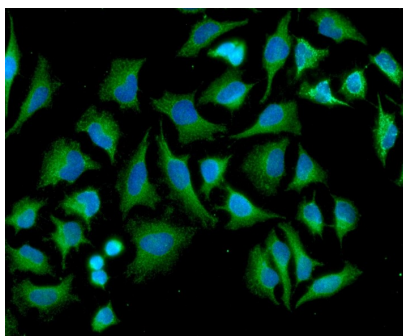
The cell lysates (40ug) were resolved by SDS-PAGE, transferred to PVDF membrane and probed with anti-human IFN-beta antibody (1:1000). Proteins were visualized using a goat anti-mouse secondary antibody conjugated to HRP and an ECL detection system.

Lane 1.: HepG2 cell lysate

Lane 2.: HeLa cell lysate

Lane 3.: Jurkat cell lysate

Immunocytochemistry/Immunofluorescence (ICC/IF)



ICC/IF analysis of IFN-beta in HeLa cells. The cell was stained with ATGA0587 (1:100). The secondary antibody (green) was used Alexa Fluor 488. DAPI was stained the cell nucleus (blue).