

Human Arginase 2/ARG2 antibody

Catalog Number: ATGA0539

PRODUCT INFORMATION

Catalog number

ATGA0539

Clone No.

AT7F8

Product type

Monoclonal antibody

UnitProt No.

P78540

NCBI Accession No.

NP_001163

Alternative Names

Arginase-2 type II, Kidney arginase, Non-hepatic arginase, Arginase-2, type II Arginase IImitochondrial, Kidney type arginase, Non hepatic arginase

Additional Information

This product was produced from tissue culture supernatant.

PRODUCT SPECIFICATION

Antibody Host

Mouse

Reacts With

Human

Concentration

1mg/ml (determined by BCA assay)

Formulation

Liquid in. Phosphate-Buffered Saline (pH 7.4) with 0.02% Sodium Azide, 10% glycerol

Immunogen

Recombinant human ARG2 (23-354aa) purified from E. coli

Isotype

IgG1 kappa

Purification Note

By protein-A affinity chromatography

Application

ELISA, WB

Usage

The antibody has been tested by ELISA and Western blot analysis to assure specificity and reactivity. Since

Human Arginase 2/ARG2 antibody

Catalog Number: ATGA0539

application varies, however, each investigation should be titrated by the reagent to obtain optimal results.

Storage

Can be stored at +2C to +8C for 1 week. For long term storage, aliquot and store at -20C to -80C. Avoid repeated freezing and thawing cycles.

BACKGROUND

Description

Arginase 2 catalyzes the same reaction as arginase 1, but differs in its tissue specificity and subcellular location. Specifically, arginase 2 localizes to the mitochondria. Arginase 2 is expressed in non-hepatic tissues, with the highest levels of expression in the kidneys, but, unlike arginase 1, is not expressed in liver.

General References

Watts JA., et al. (2011) *Pulm Pharmacol Ther.* 24(4): 407-413.

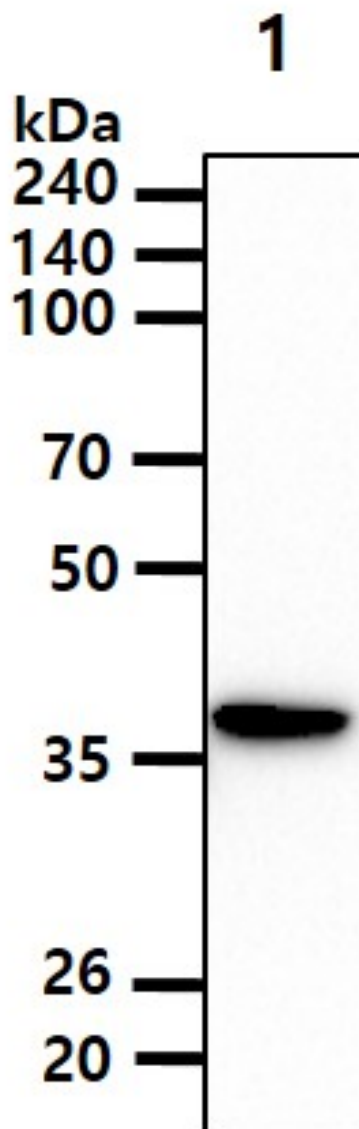
Tadie JM., et al. (2008) *Am J Physiol Lung Cell Mol Physiol.* 294(3): 489-497.

DATA

Western blot analysis (WB)

Human Arginase 2/ARG2 antibody

Catalog Number: ATGA0539



The cell lysate(40ug) was resolved by SDS-PAGE, transferred to PVDF membrane and probed with anti-human ARG2 antibody (1:1000). Proteins were visualized using a goat anti-mouse secondary antibody conjugated to HRP and an ECL detection system.
Lane 1.: SW480 cell lysate