

Human EGFR antibody

Catalog Number: ATGA0548

PRODUCT INFORMATION

Catalog number

ATGA0548

Clone No.

AT6E3

Product type

Monoclonal antibody

UnitProt No.

P00533

NCBI Accession No.

NP_005219

Alternative Names

Epidermal growth factor receptor, ERBB, ERBB1, HER1, NISBD2, PIG61, mENA, ERRP, Proto-oncogene c-ErbB-1, Receptor tyrosine-protein kinase erbB-1, erythroblastic leukemia viral (v-erb-b) oncogene homolog (avian)

Additional Information

This product was produced from tissue culture supernatant.

PRODUCT SPECIFICATION

Antibody Host

Mouse

Reacts With

Human

Concentration

1mg/ml (determined by BCA assay)

Formulation

Liquid in. Phosphate-Buffered Saline (pH 7.4) with 0.02% Sodium Azide, 10% glycerol

Immunogen

Recombinant human EGFR (424-605aa) purified from E. coli

Isotype

IgG2b kappa

Purification Note

By protein-G affinity chromatography

Application

ELISA, WB, ICC/IF

Usage

The antibody has been tested by ELISA, Western blot and ICC/IF analysis to assure specificity and reactivity.

Human EGFR antibody

Catalog Number: ATGA0548

Since application varies, however, each investigation should be titrated by the reagent to obtain optimal results.

Storage

Can be stored at +2C to +8C for 1 week. For long term storage, aliquot and store at -20C to -80C. Avoid repeated freezing and thawing cycles.

BACKGROUND

Description

Epidermal growth factor receptor (EGFR) is a 170 kDa membrane protein first identified as a binding partner of EGF. Also, EGFR phosphorylated itself (autophosphorylation) in response to EGF treatment. The overexpression of EGFR in various epithelial tumors was widely reported and it has been substantiated that deregulation of EGFR itself and its signaling pathways an important role in human cancers.

General References

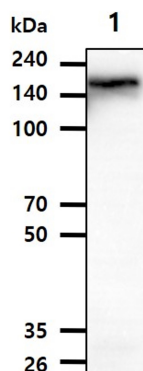
Cohen S, (1964) Nat Cancer Inst Monogr, 13: 13-27.

Toyoda H, et al. (1995) J Biol Chem, 270: 7495-500.

Carpenter G, et al. (1978) Nature,276: 409-10.

DATA

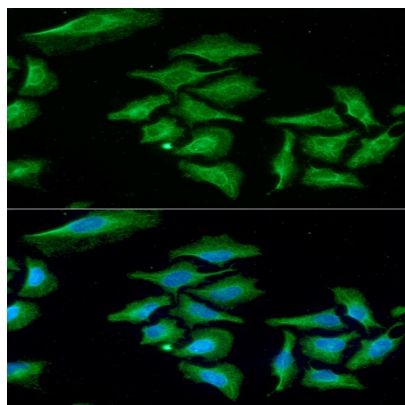
Western blot analysis (WB)



The cell lysate(40ug) was resolved by SDS-PAGE, transferred to PVDF membrane and probed with anti-human EGFR antibody (1:1000). Proteins were visualized using a goat anti-mouse secondary antibody conjugated to HRP and an ECL detection system.

Lane 1.: HacaT cell lysate

Immunocytochemistry/Immunofluorescence (ICC/IF)



ICC/IF analysis of EGFR in HeLa cells. The cell was stained with ATGA0548 (1:100). The secondary antibody (green) was used Alexa Fluor 488. DAPI was stained the cell nucleus (blue).