

Human STAT1 antibody

Catalog Number: ATGA0546

PRODUCT INFORMATION

Catalog number

ATGA0546

Clone No.

AT1F4

Product type

Monoclonal antibody

UnitProt No.

P42224

NCBI Accession No.

NP_009330

Alternative Names

Signal transducer and activator of transcription 1 91kDa, ISGF-3, STAT91, Transcription factor ISGF-3 components p91/p84, Signal transducer and activator of transcription 1, 91kDa

Additional Information

This product was produced from tissue culture supernatant.

PRODUCT SPECIFICATION

Antibody Host

Mouse

Reacts With

Human

Concentration

1mg/ml (determined by BCA assay)

Formulation

Liquid in. Phosphate-Buffered Saline (pH 7.4) with 0.02% Sodium Azide, 10% glycerol

Immunogen

Recombinant human STAT1 (1-712aa) purified from E. coli

Isotype

IgG1 kappa

Purification Note

By protein-G affinity chromatography

Application

ELISA, WB

Usage

The antibody has been tested by ELISA and Western blot analysis to assure specificity and reactivity. Since

Human STAT1 antibody

Catalog Number: ATGA0546

application varies, however, each investigation should be titrated by the reagent to obtain optimal results.

Storage

Can be stored at +2C to +8C for 1 week. For long term storage, aliquot and store at -20C to -80C. Avoid repeated freezing and thawing cycles.

BACKGROUND

Description

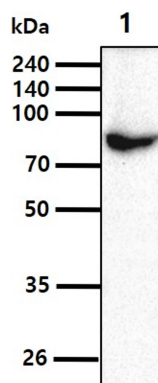
STAT1, also known as STAT91, is a member of the STAT protein family. In response to cytokines and growth factors, STAT family members are phosphorylated by the receptor associated kinases, and then form homo- or heterodimers that translocate to the cell nucleus where they act as transcription activators. STAT1 is activated by peptide hormones, growth factors and cytokines, particularly cytokines of the interferon family.

General References

Farlik M., et al. (2010) Immunity. 33(1):25-34.

DATA

Western blot analysis (WB)



The cell lysate(40ug) was resolved by SDS-PAGE, transferred to PVDF membrane and probed with anti-human STAT1 antibody (1:1000). Proteins were visualized using a goat anti-mouse secondary antibody conjugated to HRP and an ECL detection system.
Lane 1.: A431 cell lysate