

Human MYL4 antibody

Catalog Number: ATGA0552

PRODUCT INFORMATION

Catalog number

ATGA0552

Clone No.

AT4E8

Product type

Monoclonal antibody

UnitProt No.

P12829

NCBI Accession No.

NP_001002841

Alternative Names

Myosin light chain 4, Myosin, light chain 4, ALC1, AMLC, GT1

Additional Information

This product was produced from tissue culture supernatant.

PRODUCT SPECIFICATION

Antibody Host

Mouse

Reacts With

Human

Concentration

1mg/ml (determined by BCA assay)

Formulation

Liquid in. Phosphate-Buffered Saline (pH 7.4) with 0.02% Sodium Azide, 10% glycerol

Immunogen

Recombinant human MYL4 (1-197aa) purified from E. coli

Isotype

IgG2a kappa

Purification Note

By protein-A affinity chromatography

Application

ELISA, WB

Usage

The antibody has been tested by ELISA and Western blot analysis to assure specificity and reactivity. Since application varies, however, each investigation should be titrated by the reagent to obtain optimal results.

Human MYL4 antibody

Catalog Number: ATGA0552

Storage

Can be stored at +2C to +8C for 1 week. For long term storage, aliquot and store at -20C to -80C. Avoid repeated freezing and thawing cycles.

BACKGROUND

Description

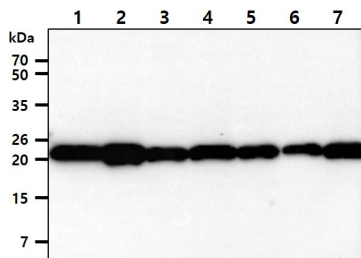
Myosin light chain 4 is a protein that in humans is encoded by the MYL4 gene. Myosin is a hexameric ATPase cellular motor protein. It is composed of two myosin heavy chains, two nonphosphorylatable myosin alkali light chains, and two phosphorylatable myosin regulatory light chains. This gene encodes a myosin alkali light chain that is found in embryonic muscle and adult atria. Two alternatively spliced transcript variants encoding the same protein have been found for this gene.

General References

Kurabayashi, M., et al. (1998) J Biol Chem 263(27): 13930-6.
Rotter, M., et al. (1991) Nucleic Acids Res 19(7): 1497-504.

DATA

Western blot analysis (WB)



The cell lysates(40ug) were resolved by SDS-PAGE, transferred to PVDF membrane and probed with anti-human MYL4 antibody (1:1000). Proteins were visualized using a goat anti-mouse secondary antibody conjugated to HRP and an ECL detection system.

Lane 1.: HeLa cell lysate
Lane 2.: HepG2 cell lysate
Lane 3.: K-562 cell lysate
Lane 4.: MCF7 cell lysate
Lane 5.: Jurkat cell lysate
Lane 6.: 293T cell lysate
Lane 7.: LnCap cell lysate