

EGFP antibody

Catalog Number: ATGA0553

PRODUCT INFORMATION

Catalog number

ATGA0553

Clone No.

AT1D9

Product type

Monoclonal antibody

UnitProt No.

N/A

NCBI Accession No.

ABW34377

Alternative Names

Enhanced green fluorescent protein

PRODUCT SPECIFICATION

Antibody Host

Mouse

Concentration

1mg/ml (determined by BCA assay)

Formulation

Liquid in. Phosphate-Buffered Saline (pH 7.4) with 0.02% Sodium Azide, 10% glycerol

Immunogen

Recombinant EGFP(1-239aa) purified from E. coli

Isotype

IgG2a kappa

Purification Note

By protein-G affinity chromatography

Application

ELISA, WB

Usage

The antibody has been tested by ELISA and Western blot analysis to assure specificity and reactivity. Since application varies, however, each investigation should be titrated by the reagent to obtain optimal results.

Storage

Can be stored at +2C to +8C for 1 week. For long term storage, aliquot and store at -20C to -80C. Avoid repeated freezing and thawing cycles.

EGFP antibody

Catalog Number: ATGA0553

BACKGROUND

Description

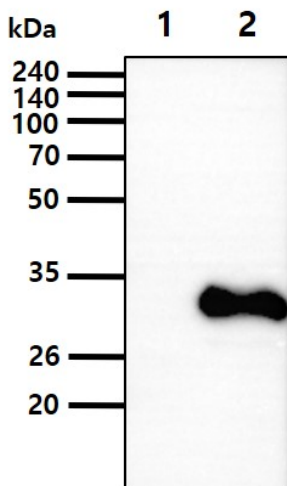
Green fluorescent protein (GFP) here refers to the protein first purified from jellyfish *Aequorea victoria*, though many other organisms have similar proteins. It is a 26.9 kDa protein (composed of 238 a.a. residues) that shows green fluorescence in shortwave light (blue to ultraviolet). Despite of wild-type GFP, many mutants of GFP have been engineered for wider usage in research. Enhanced GFP (eGFP) has S65T and F64L mutations, which make GFP show increased fluorescence and fold more efficiently under 37 degrees C, respectively. eGFP allows the use of GFP in mammalian cells. In *A. Victoria*, GFP plays roles as an energy transfer acceptor. It has long been used in cell and molecular biology as a reporter of gene expression. GFP can also be applied as a molecular thermometer to measure temperature accurately in fluids.

General References

Phillips GJ (Oct 2001) FEMS Microbiology Letters. 204 (1): 9-18.

DATA

Western blot analysis (WB)



The cell lysates(40ug) were resolved by SDS-PAGE, transferred to PVDF membrane and probed with anti-human EGFP antibody (1:1000). Proteins were visualized using a goat anti-mouse secondary antibody conjugated to HRP and an ECL detection system.

Lane 1.: 293T cell lysate

Lane 2: EGFP Transfected 293T cell lysate