

Human Myoglobin antibody

Catalog Number: ATGA0567

PRODUCT INFORMATION

Catalog number

ATGA0567

Clone No.

AT6E10

Product type

Monoclonal antibody

UnitProt No.

P02144

NCBI Accession No.

NP_976312

Alternative Names

Myoglobin, PVALB

Additional Information

This product was produced from tissue culture supernatant.

PRODUCT SPECIFICATION

Antibody Host

Mouse

Reacts With

Human

Concentration

1mg/ml (determined by BCA assay)

Formulation

Liquid in. Phosphate-Buffered Saline (pH 7.4) with 0.02% Sodium Azide, 10% glycerol

Immunogen

Recombinant human Myoglobin(1-154aa) purified from E. coli

Isotype

IgG1 kappa

Purification Note

By protein-A affinity chromatography

Application

ELISA, WB

Usage

The antibody has been tested by ELISA and Western blot analysis to assure specificity and reactivity. Since application varies, however, each investigation should be titrated by the reagent to obtain optimal results.

Human Myoglobin antibody

Catalog Number: ATGA0567

Storage

Can be stored at +2C to +8C for 1 week. For long term storage, aliquot and store at -20C to -80C. Avoid repeated freezing and thawing cycles.

BACKGROUND

Description

MB (Myoglobin) is an iron- and oxygen-binding protein. It is found in abundance in the muscle tissue of vertebrates in general and in almost all mammals. MB (myoglobin) is related to hemoglobin, which consists of four myoglobin-like subunits that form a tetramer and are responsible for carrying oxygen in blood. The only time myoglobin is found in the bloodstream is when it is released following muscle injury. It is an abnormal finding, and can be diagnostically relevant when found in blood.

General References

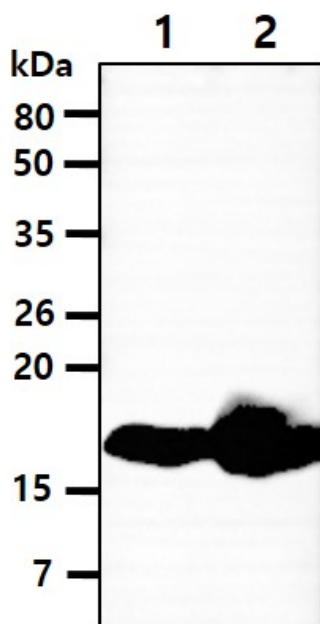
George A., et al. (2004). Journal of Experimental Biology 207 (Pt 20): 3441-6.

Akaboshi E (1985). Gene 33 (3): 241-9.

J. P. Collman., et al. (2004). Chem. Rev. 104 (2): 561-588.

DATA

Western blot analysis (WB)



The tissue lysates (40ug) were resolved by SDS-PAGE, transferred to PVDF membrane and probed with anti-human Myoglobin antibody (1:1000). Proteins were visualized using a goat anti-mouse secondary antibody conjugated to HRP and an ECL detection system.
Lane 1.: Mouse muscle tissue lysate
Lane 2.: Mouse heart tissue lysate