

Human Serpin B5/Maspin antibody

Catalog Number: ATGA0575

PRODUCT INFORMATION

Catalog number

ATGA0575

Clone No.

AT2N6

Product type

Monoclonal antibody

UnitProt No.

P36952

NCBI Accession No.

NP_002630

Alternative Names

Serine (or cysteine) proteinase inhibitor clade B (ovalbumin) member 5, Serine (or cysteine) proteinaseinhibitor clade B (ovalbumin) member 5, Serpin B5, Protease inhibitor 5, SERPINB5, PI5, Serine (orcysteine) proteinase inhibitor clade B (ovalbumin) member 5 Serine (or cysteine) peptidase inhibitor, clade B,member 5, Ovalbumin, PI-5, Serpin peptidase inhibitor, Serpin peptidase inhibitor, clade B (ovalbumin),member 5, SERPINB5, Spi5, Spi7

Additional Information

This product was produced from tissue culture supernatant.

PRODUCT SPECIFICATION

Antibody Host

Mouse

Reacts With

Human

Concentration

1mg/ml (determined by BCA assay)

Formulation

Liquid in. Phosphate-Buffered Saline (pH 7.4) with 0.02% Sodium Azide, 10% glycerol

Immunogen

Recombinant Maspin (1-375aa) purified from E. coli

Isotype

IgG2b kappa

Purification Note

By protein-A affinity chromatography

Application

ELISA, WB, ICC/IF

Human Serpin B5/Maspin antibody

Catalog Number: ATGA0575

Usage

The antibody has been tested by ELISA, Western blot and ICC/IF analysis to assure specificity and reactivity. Since application varies, however, each investigation should be titrated by the reagent to obtain optimal results.

Storage

Can be stored at +2C to +8C for 1 week. For long term storage, aliquot and store at -20C to -80C. Avoid repeated freezing and thawing cycles.

BACKGROUND

Description

Serine (or cysteine) proteinase inhibitor clade B (ovalbumin) member 5, also known as Maspin, is a tumorsuppressor protein of serine proteinase inhibitor family. It plays an essential role in embryonic developmentthrough critical roles in cell adhesion. Also, it is present in normal breast and prostatic epithelial cells butdownregulated in the respective carcinomas.

General References

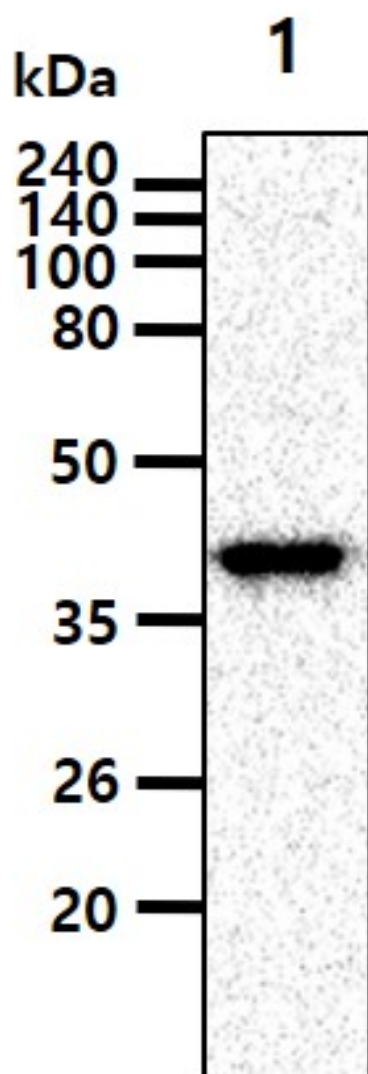
Lockett J. et al., (2006) J Cell Biochem 97(4):651-660.
Khalkhali Ellis Z. et al., (2006) Clin Cancer Res 12(24):7279-7283.

DATA

Western blot analysis (WB)

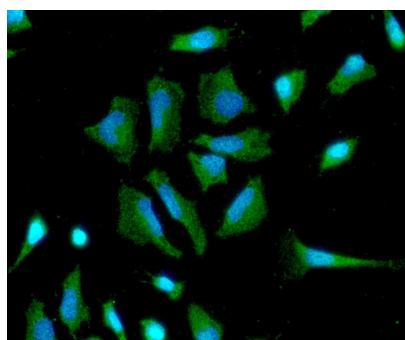
Human Serpin B5/Maspin antibody

Catalog Number: ATGA0575



The cell lysate(40ug) was resolved by SDS-PAGE, transferred to PVDF membrane and probed with anti-human Serpin B5/Maspin antibody (1:1000). Proteins were visualized using a goat anti-mouse secondary antibody conjugated to HRP and an ECL detection system.
Lane 1.: A431 cell lysate

Immunocytochemistry/Immunofluorescence (ICC/IF)



ICC/IF analysis of Serpin B5/Maspin in HeLa cells. The cell was stained with ATGA0575 (1:100). The secondary antibody (green) was used Alexa Fluor 488. DAPI was stained the cell nucleus (blue).