

Human Coactosin-like Protein 1/COTL1 antibody

Catalog Number: ATGA0576

PRODUCT INFORMATION

Catalog number

ATGA0576

Clone No.

AT1D6

Product type

Monoclonal antibody

UnitProt No.

Q14019

NCBI Accession No.

NP_066972

Alternative Names

Coactosin like F-actin binding protein 1, Coactosin-like 1 (Dictyostelium), Coactosin-like F-actin binding protein 1, CLP

Additional Information

This product was produced from tissue culture supernatant.

PRODUCT SPECIFICATION

Antibody Host

Mouse

Reacts With

Human

Concentration

1mg/ml (determined by BCA assay)

Formulation

Liquid in. Phosphate-Buffered Saline (pH 7.4) with 0.02% Sodium Azide, 10% glycerol

Immunogen

Recombinant human COTL1 (1-142aa) purified from E. coli

Isotype

IgG2b kappa

Purification Note

By protein-A affinity chromatography

Application

ELISA, WB, FACS

Usage

The antibody has been tested by ELISA, Western blot and FACS analysis to assure specificity and reactivity.

Human Coactosin-like Protein 1/COTL1 antibody

Catalog Number: ATGA0576

Since application varies, however, each investigation should be titrated by the reagent to obtain optimal results.

Storage

Can be stored at +2C to +8C for 1 week. For long term storage, aliquot and store at -20C to -80C. Avoid repeated freezing and thawing cycles.

BACKGROUND

Description

COTL1 (coactosin-like 1), also known as CLP, is a 142 amino acid cytoplasmic and cytoskeletal protein that belongs to the actin-binding proteins ADF family and coactosin subfamily. COTL1 is first identified in slime mold and is found at highest levels in kidney, placenta, lung and peripheral blood leukocytes. COTL1 is one of many proteins that participate in regulation of Actin's cytoskeleton through a calcium dependent mechanism, but has not been shown to have a direct effect on Actin depolymerization.

General References

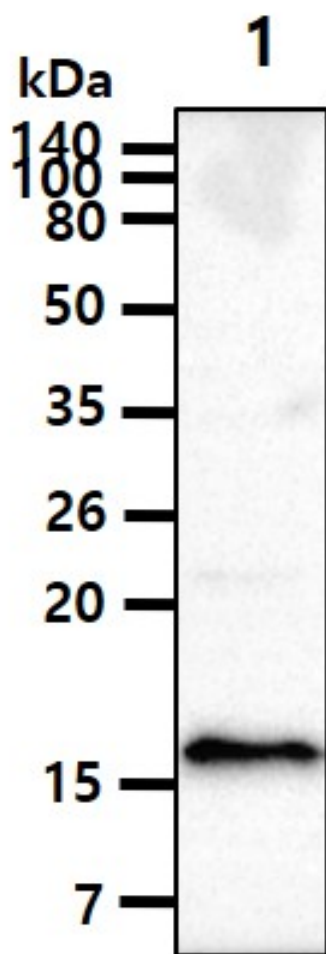
- Provost. P., et al. (2001) *Biochem J* 359(1): 255-263.
- Dai. H., et al. (2006) *Biochim Biophys Acta* 1764(11): 1688-1700.
- Esser. J., et al. (2010) *Biochem J* 425(1): 265-274.

DATA

Western blot analysis (WB)

Human Coactosin-like Protein 1/COTL1 antibody

Catalog Number: ATGA0576

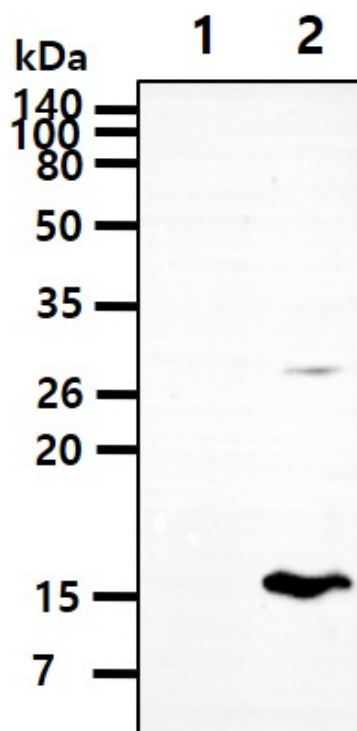


The cell lysate(40ug) was resolved by SDS-PAGE, transferred to PVDF membrane and probed with anti-human Coactosin-like Protein 1/COTL1 antibody (1:500). Proteins were visualized using a goat anti-mouse secondary antibody conjugated to HRP and an ECL detection system.

Lane 1.: HeLa cell lysate

Human Coactosin-like Protein 1/COTL1 antibody

Catalog Number: ATGA0576

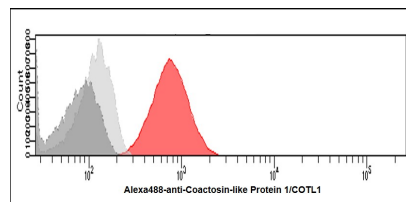


The cell lysates(20ug) were resolved by SDS-PAGE, transferred to PVDF membrane and probed with anti-human Coactosin-like Protein 1/COTL1 antibody (1:1000). Proteins were visualized using a goat anti-mouse secondary antibody conjugated to HRP and an ECL detection system.

Lane 1.: 293T cell lysate

Lane 2: Coactosin-like Protein 1/COTL1 Transfected 293T cell lysate

Flow cytometry (FACS)



Flow cytometry analysis of Coactosin-like Protein 1/COTL1 in HeLa cells. The cell was stained with ATGA0576 at 2-5ug for 1×10^6 cells (red). A Goat anti mouse IgG (Alexa fluor 488) was used as the secondary antibody. Mouse monoclonal IgG was used as the isotype control (dark gray), cells without incubation with primary and secondary antibody was used as the negative control (light gray).