

# Human PSMD11 antibody

Catalog Number: ATGA0577

## PRODUCT INFORMATION

---

**Catalog number**

ATGA0577

**Clone No.**

AT2C7

**Product type**

Monoclonal Antibody

**UnitProt No.**

O00231

**NCBI Accession No.**

NP\_002806

**Alternative Names**

proteasome 26S non-ATPase subunit 11, S9, Rpn6, p44.5, MGC3844

**Additional Information**

This product was produced from tissue culture supernatant

## PRODUCT SPECIFICATION

---

**Antibody Host**

Mouse

**Reacts With**

Human

**Concentration**

1mg/ml (determined by BCA assay)

**Formulation**

Liquid in. Phosphate-Buffered Saline (pH 7.4) with 0.02% Sodium Azide, 10% glycerol

**Immunogen**

Recombinant human PSMD11 (1-422aa) purified from E. coli

**Isotype**

IgG2b kappa

**Purification Note**

By protein-G affinity chromatography

**Application**

ELISA, WB, ICC/IF

**Usage**

The antibody has been tested by ELISA, Western blot analysis and ICC/IF to assure specificity and reactivity. Since application varies, however, each investigation should be titrated by the reagent to obtain optimal results.

# Human PSMD11 antibody

Catalog Number: ATGA0577

## Storage

Can be stored at +2C to +8C for 1 week. For long term storage, aliquot and store at -20C to -80C. Avoid repeated freezing and thawing cycles.

## BACKGROUND

### Description

The 26S proteasome is a multicatalytic proteinase complex with a highly ordered structure composed of 2 complexes, a 20S core and a 19S regulator. The 20S core is composed of 4 rings of 28 non-identical subunits; 2 rings are composed of 7 alpha subunits and 2 rings are composed of 7 beta subunits. The 19S regulator is composed of a base, which contains 6 ATPase subunits and 2 non-ATPase subunits, and a lid, which contains up to 10 non-ATPase subunits. PSMD11 is a member of the proteasome subunit S9 family that functions as a nonATPase subunit of the 19S regulator and is phosphorylated by AMP-activated protein kinase.

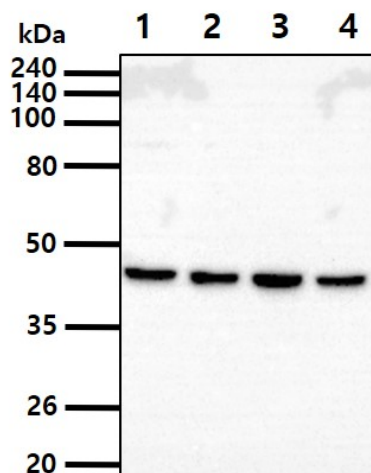
### General References

Ogris E., et al. (1999) J. Biol. Chem. 274: 14382-14391.

Gagnon S.N., et al. (2002) Biochem. J. 368: 263-271.

## DATA

### Western blot analysis (WB)



The cell lysates (40ug) were resolved by SDS-PAGE, transferred to PVDF membrane and probed with anti-human PSMD11 antibody (1:1000). Proteins were visualized using a goat anti-mouse secondary antibody conjugated to HRP and an ECL detection system.

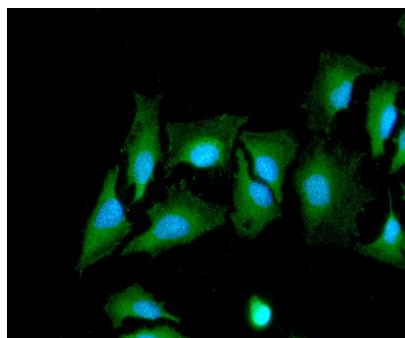
Lane 1.: HeLa cell lysate

Lane 2.: 293T cell lysate

Lane 3.: U87-MG cell lysate

Lane 4.: NIH-3T3 cell lysate

### Immunocytochemistry/Immunofluorescence (ICC/IF)



ICC/IF analysis of PSMD11 in HeLa cells. The cell was stained with ATGA0577 (1:100). The secondary antibody (green) was used Alexa Fluor 488. DAPI was stained the cell nucleus (blue).