

Human LSM2 antibody

Catalog Number: ATGA0581

PRODUCT INFORMATION

Catalog number

ATGA0581

Clone No.

AT1G7

Product type

Monoclonal Antibody

UnitProt No.

Q9Y333

NCBI Accession No.

NP_067000

Alternative Names

U6 snRNA-associated Sm-like protein LSm2, Protein G7b, Small nuclear ribonuclear protein D homolog, snRNP core Sm-like protein Sm-x5, C6orf28, YBL026W

PRODUCT SPECIFICATION

Antibody Host

Mouse

Reacts With

Human

Concentration

1mg/ml (determined by BCA assay)

Formulation

Liquid in. Phosphate-Buffered Saline (pH 7.4) with 0.02% Sodium Azide, 10% glycerol

Immunogen

Recombinant human LSm2 (1-95aa) purified from E. coli

Isotype

IgG2a kappa

Purification Note

By protein-G affinity chromatography

Application

ELISA, WB

Usage

The antibody has been tested by ELISA and Western blot analysis to assure specificity and reactivity. Since application varies, however, each investigation should be titrated by the reagent to obtain optimal results.

Human LSM2 antibody

Catalog Number: ATGA0581

Storage

Can be stored at +2C to +8C for 1 week. For long term storage, aliquot and store at -20C to -80C. Avoid repeated freezing and thawing cycles.

BACKGROUND

Description

LSM2 is a member of the LSm family of RNA-binding proteins. Component of LSm protein complexes, which are involved in RNA processing and may function in a chaperone-like manner. Component of the cytoplasmic complex which is thought to be involved in mRNA degradation by activating the decapping step. Component of the nuclear LSM2 complex, which is involved in splicing of nuclear mRNAs. LSM2 associates with multiple snRNP complexes containing the U6 snRNA. It binds directly to the U6 snRNA and plays a role in the biogenesis and stability of the U6 snRNP and U4/U6 snRNP complexes. It probably also is involved degradation of nuclear pre-mRNA by targeting them for decapping. LSM2 binds specifically to the 3'-terminal U-tract of U6 snRNA. LSM2-LSM8 probably is involved in processing of pre-tRNAs, pre-rRNAs and U3 snoRNA.

General References

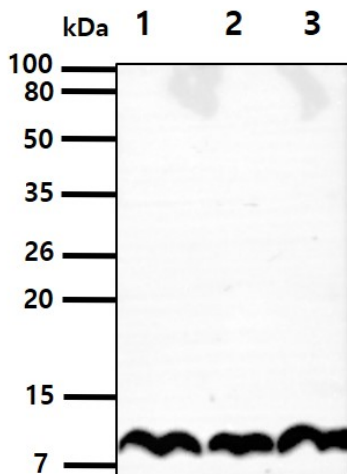
Luhtala N, Parker R. *Nucleic Acids Res.* 2009 Sep 37(16):5529-36.

Fernandez CF, Pannone BK, Chen X, Fuchs G, Wolin SL. *Mol Biol Cell.* 2004 Jun 15(6):2842-52.

Achsel T., et al. (1999) *EMBO J.* 18:5789-5802.

DATA

Western blot analysis (WB)



The cell lysates (40ug) were resolved by SDS-PAGE, transferred to PVDF membrane and probed with anti-human LSm2 antibody (1:1,000). Proteins were visualized using a goat anti-mouse secondary antibody conjugated to HRP and an ECL detection system.

Lane 1.: MCF7 cell lysate

Lane 2.: HeLa cell lysate

Lane 3.: 293T cell lysate