

Human PCBP1 antibody

Catalog Number: ATGA0582

PRODUCT INFORMATION

Catalog number

ATGA0582

Clone No.

AT2A10

Product type

Monoclonal Antibody

UnitProt No.

Q15365

NCBI Accession No.

NP_006187

Alternative Names

Poly(rC) binding protein 1, Poly(rC) binding protein 1, hnRNP-E1, hnRNP-X, HNRPE1, HNRPX

PRODUCT SPECIFICATION

Antibody Host

Mouse

Reacts With

Human

Concentration

1mg/ml (determined by BCA assay)

Formulation

Liquid in. Phosphate-Buffered Saline (pH 7.4) with 0.02% Sodium Azide, 10% glycerol

Immunogen

Recombinant human PCBP1 (1-163aa) purified from E. coli

Isotype

IgG2a kappa

Purification Note

By protein-G affinity chromatography

Application

ELISA, WB, ICC/IF

Usage

The antibody has been tested by ELISA, Western blot and ICC/IF analysis to assure specificity and reactivity. Since application varies, however, each investigation should be titrated by the reagent to obtain optimal results.

Storage

Human PCBP1 antibody

Catalog Number: ATGA0582

Can be stored at +2C to +8C for 1 week. For long term storage, aliquot and store at -20C to -80C. Avoid repeated freezing and thawing cycles.

BACKGROUND

Description

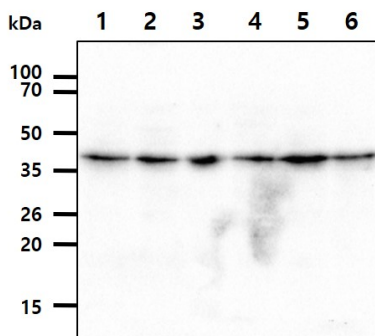
PCBP-1 and PCBP-2 have paralogues (PCBP3 and PCBP4) which are thought to have arisen as a result of duplication events of entire genes. PCBP1 constitutes a set of polypeptides that contribute to mRNA transcription, pre-mRNA processing as well as mature mRNA transport to the cytoplasm and translation. It has also been implicated in translational control of the 15-lipoxygenase mRNA, human Papillomavirus type 16 L2 mRNA, and hepatitis A virus RNA.

General References

Beausoleil S.A., et al. (2006) Nat. Biotechnol. 24(10):1285-1292.
Leffers H., et al. (1995) Eur J Biochem 230(2):447-53.

DATA

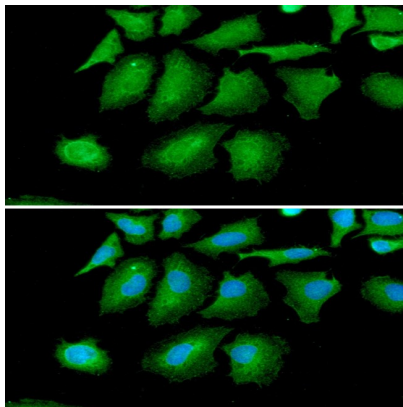
Western blot analysis (WB)



The cell lysates (40ug) were resolved by SDS-PAGE, transferred to PVDF membrane and probed with anti-human PCBP1 antibody (1:1000). Proteins were visualized using a goat anti-mouse secondary antibody conjugated to HRP and an ECL detection system.

Lane 1.: HeLa cell lysate
Lane 2.: HepG2 cell lysate
Lane 3.: K562 cell lysate
Lane 4.: 293T cell lysate
Lane 5.: Jurkat cell lysate
Lane 6.: MCF7 cell lysate

Immunocytochemistry/Immunofluorescence (ICC/IF)



ICC/IF analysis of PCBP1 in HeLa cells line, stained with DAPI (Blue) for nucleus staining and monoclonal anti-human PCBP1 antibody (1:100) with goat anti-mouse IgG-Alexa fluor 488 conjugate (Green).