

Human NM23-H1/NME1 antibody

Catalog Number: ATGA0585

PRODUCT INFORMATION

Catalog number

ATGA0585

Clone No.

AT5F4

Product type

Monoclonal antibody

UnitProt No.

P15531

NCBI Accession No.

NP_000260

Alternative Names

NME/NM23 nucleoside diphosphate kinase 1, Nucleoside diphosphate kinase A, Granzyme A-activated Dnase, GAAD, Metastasis inhibition factor nm23, NM23-H1, Tumor metastatic process-associated protein, NDK A, NDP kinase A, NDPKA, NM23

Additional Information

This product was produced from tissue culture supernatant.

PRODUCT SPECIFICATION

Antibody Host

Mouse

Reacts With

Human

Concentration

1mg/ml (determined by BCA assay)

Formulation

Liquid in. Phosphate-Buffered Saline (pH 7.4) with 0.02% Sodium Azide, 10% glycerol

Immunogen

Recombinant human NME1 (1-152aa) purified from E. coli

Isotype

IgG2b kappa

Purification Note

By protein-A affinity chromatography

Application

ELISA, WB, ICC/IF

Human NM23-H1/NME1 antibody

Catalog Number: ATGA0585

Usage

The antibody has been tested by ELISA, Western blot and ICC/IF analysis to assure specificity and reactivity. Since application varies, however, each investigation should be titrated by the reagent to obtain optimal results.

Storage

Can be stored at +2C to +8C for 1 week. For long term storage, aliquot and store at -20C to -80C. Avoid repeated freezing and thawing cycles.

BACKGROUND

Description

Non-metastatic cells 1 (NME1), also known as NM23-H1, originally identified as a candidate metastasis suppressor gene. NME1 is expressed in different tumor types where their levels have been alternatively associated with reduced or increased metastatic potential. Reductions in NME1 expression have been significantly associated with aggressive behavior in melanoma, breast, colon, and gastric carcinomas. On the contrary, high levels of NME1 gene expression are noted in the advanced stage of thyroid carcinomas.

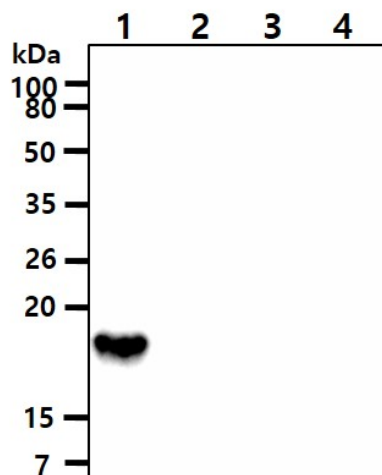
General References

Tee YT., et al. (2006) Taiwan J Obstet Gynecol. 45(2): 107-13.

Negronei A., et al. (2000) Cell Death Differ. 7(9): 843-50.

DATA

Western blot analysis (WB)

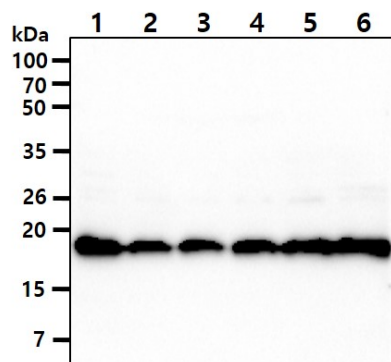


The recombinant protein (50ng) were resolved by SDS-PAGE, transferred to PVDF membrane and probed with anti-human NM23-H1 antibody (1:1000). Proteins were visualized using a goat anti-mouse secondary antibody conjugated to HRP and an ECL detection system.

Lane 1.: Recombinant human NME1 protein
Lane 2.: Recombinant human NME2 protein
Lane 3.: Recombinant human NME3 protein
Lane 4.: Recombinant human NME4 protein

Human NM23-H1/NME1 antibody

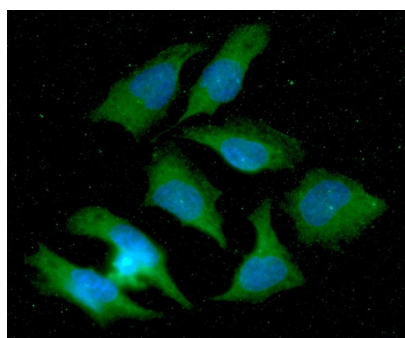
Catalog Number: ATGA0585



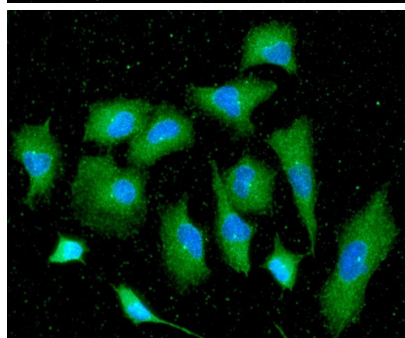
The cell lysates (40ug) were resolved by SDS-PAGE, transferred to PVDF membrane and probed with anti-human NM23-H1 antibody (1:1000). Proteins were visualized using a goat anti-mouse secondary antibody conjugated to HRP and an ECL detection system.

Lane 1.: HeLa cell lysate
Lane 2.: A549 cell lysate
Lane 3.: Jurkat cell lysate
Lane 4.: HepG2 cell lysate
Lane 5.: MCF7 cell lysate
Lane 6.: PC3 cell lysate

Immunocytochemistry/Immunofluorescence (ICC/IF)



ICC/IF analysis of NM23-H1 in HeLa cells. The cell was stained with ATGA0585 (1:100). The secondary antibody (green) was used Alexa Fluor 488. DAPI was stained the cell nucleus (blue).



ICC/IF analysis of NM23-H1 in A549 cells. The cell was stained with ATGA0585 (1:100). The secondary antibody (green) was used Alexa Fluor 488. DAPI was stained the cell nucleus (blue).