

Human RalA/RalB antibody

Catalog Number: ATGA0590

PRODUCT INFORMATION

Catalog number

ATGA0590

Clone No.

AT41E2

Product type

Monoclonal antibody

UnitProt No.

P11233

NCBI Accession No.

NP_005393

Alternative Names

Ras-related protein Ral-A, RAL,Ras-related protein Ral-B

PRODUCT SPECIFICATION

Antibody Host

Mouse

Reacts With

Human

Concentration

1mg/ml (determined by BCA assay)

Formulation

Liquid in. Phosphate-Buffered Saline (pH 7.4) with 0.02% Sodium Azide, 10% glycerol

Immunogen

Recombinant human RALA (1-203aa) purified from E. coli

Isotype

IgG2b kappa

Purification Note

By protein-A affinity chromatography

Application

ELISA, WB, FACS

Usage

The antibody has been tested by ELISA, Western blot and FACS analysis to assure specificity and reactivity. Since application varies, however, each investigation should be titrated by the reagent to obtain optimal results.

Storage

Human RalA/RalB antibody

Catalog Number: ATGA0590

Can be stored at +2C to +8C for 1 week. For long term storage, aliquot and store at -20C to -80C. Avoid repeated freezing and thawing cycles.

BACKGROUND

Description

RalA and RalB belong to subfamily of Ras-related GTPases. This protein mediates a distinct downstream signaling pathway from Ras that facilitates cellular transformation. It is also thought to be involved in numerous signaling cascades, including regulation of the cytoskeleton, vesicle trafficking, and endocytosis. RalA and RalB share 85% identity.

General References

Balasubramanian N., et al. (2009) *Curr. Biol.* 20:75-79.

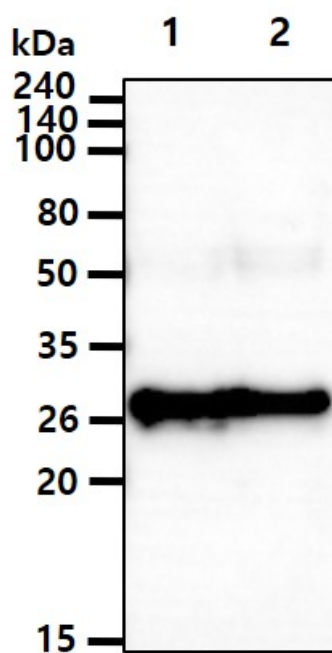
Hunt MC., et al. (2005) *J Lipid Res.* 46, 2029-32.

Willey G.M., et al. (1993), *Biochem. Biophys. Res. Comm.*, 194: 552-559.

Jullien-Flores V., et al. (1995). *J. Biol. Chem.* 270: 22473-22477.

DATA

Western blot analysis (WB)



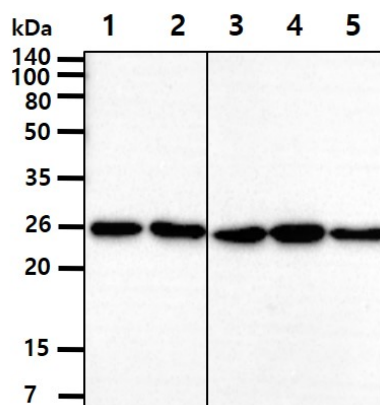
The recombinant proteins (50ng) were resolved by SDS-PAGE, transferred to PVDF membrane and probed with anti-human RalA/RalB antibody (1:1000). Proteins were visualized using a goat anti-mouse secondary antibody conjugated to HRP and an ECL detection system.

Lane 1.: Recombinant human RalA protein

Lane 2.: Recombinant human RalB protein

Human RalA/RalB antibody

Catalog Number: ATGA0590



The cell lysates(40ug) were resolved by SDS-PAGE, transferred to PVDF membrane and probed with anti-human RalA/RalB antibody (1:1000). Proteins were visualized using a goat anti-mouse secondary antibody conjugated to HRP and an ECL detection system.

Lane 1.: HeLa cell lysate

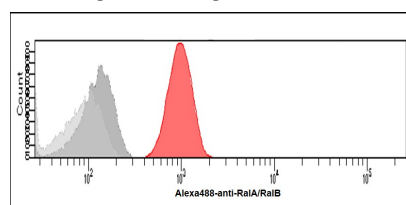
Lane 2.: HepG2 cell lysate

Lane 3.: NIH3T3 cell lysate

Lane 4.: PC3 cell lysate

Lane 5.: U87MG cell lysate

Flow cytometry (FACS)



Flow cytometry analysis of RalA/RalB in HeLa cells. The cell was stained with ATGA0590 at 2-5ug for 1x10⁶cells (red). A Goat anti mouse IgG (Alexa fluor 488) was used as the secondary antibody. Mouse monoclonal IgG was used as the isotype control (dark gray), cells without incubation with primary and secondary antibody was used as the negative control (light gray).