

Human RASSF1A antibody

Catalog Number: ARF0501

PRODUCT INFORMATION

Catalog number

ARF0501

Clone No.

3F3

Product type

Monoclonal Antibody

UnitProt No.

Q9NS23

NCBI Accession No.

NP_009113

Alternative Names

RASSF1(Ras association (RalGDS/AF-6) domain family 1),123F2, RDA32, NORE2A, RASSF1A, REH3P21, Ras association (RalGDS/AF-6) domain family member 1

PRODUCT SPECIFICATION

Antibody Host

Mouse

Reacts With

Human

Concentration

1mg/ml (determined by BCA assay)

Formulation

Liquid in. Phosphate-Buffered Saline (pH 7.4) with 0.02% Sodium Azide, 10% glycerol

Immunogen

Recombinant human RASSF1A (1-340aa) purified from E. coli.

Isotype

IgG1 kappa

Purification Note

By protein-A affinity chromatography

Application

ELISA, WB, ICC/IF

Usage

The antibody has been tested by ELISA, Western blot and ICC/IF analysis to assure specificity and reactivity. Since application varies, however, each investigation should be titrated by the reagent to obtain optimal results.

Human RASSF1A antibody

Catalog Number: ARF0501

Storage

Can be stored at +2C to +8C for 1 week. For long term storage, aliquot and store at -20C to -80C. Avoid repeated freezing and thawing cycles.

BACKGROUND

Description

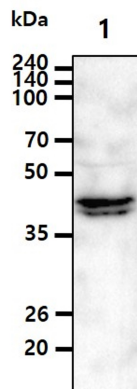
The tumor suppressor gene RASSF1A (3p21.3), human Ras association domain family 1A, is expressed in heart, brain, placenta, lung, liver, skeletal muscle, kidney, pancreas, spleen, thymus, prostate, testis, small intestine, colon, and peripheral blood leukocytes. RASSF1A expression is inhibited by hypermethylation of the CpG island including the promoter and early transcribed regions of the human RASSF1A gene. Hypermethylated RASSF1A promoter is observed in primary tumors. Furthermore, RASSF1A is related with cell cycle regulation, apoptosis and microtubule stability.

General References

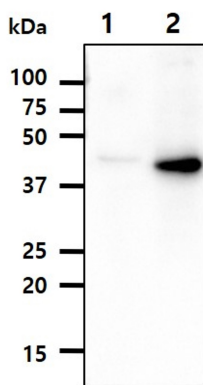
- Agathangelou A, et al., (2005) *Cancer Res.* 65, 3497-3508.
- Lerman Ml. et. al. (2000) *Cancer Res.* 60, 6116-6133.
- Strunnikova M. et al., (2005) *Mol Cell Biol.* 25, 3923-3933.
- Dammann R. et al., (2005) *Histol Histopathol.* 20, 645-663.
- Rossa W.k, et al., (2007) *American Journal of pathology.* 170, 941-950.

DATA

Western blot analysis (WB)



Cell lysate (40ug) was resolved by SDS-PAGE, transferred to PVDF membrane and probed with anti-human RASSF1A (1:500). Proteins were visualized using a goat anti-mouse secondary antibody conjugated to HRP and an ECL detection system.
Lane 1.: HeLa cell lysate

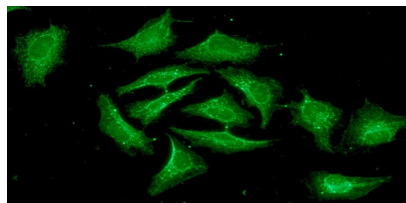


Cell lysates (5ug) were resolved by SDS-PAGE, transferred to PVDF membrane and probed with anti-human RASSF1A (1:1000). Proteins were visualized using a goat anti-mouse secondary antibody conjugated to HRP and an ECL detection system.
Lane 1.: 293T cell lysate
Lane 2.: RASSF1A transfected 293T cell lysate

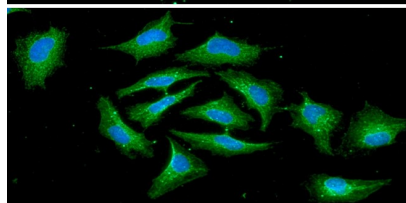
Human RASSF1A antibody

Catalog Number: ARF0501

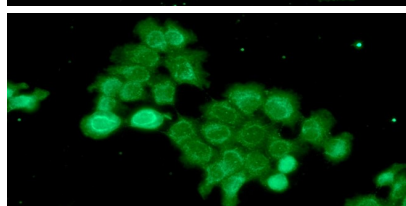
Immunocytochemistry/Immunofluorescence (ICC/IF)



ICC/IF analysis of RASSF1A in HeLa cells. The cell was stained with ARF0501 (1:100). The secondary antibody (green) was used Alexa Fluor 488. DAPI was stained the cell nucleus (blue).



ICC/IF analysis of RASSF1A in HeLa cells. The cell was stained with ARF0501 (1:100). The secondary antibody (green) was used Alexa Fluor 488. DAPI was stained the cell nucleus (blue).



ICC/IF analysis of RASSF1A in A431 cells. The cell was stained with ARF0501 (1:100). The secondary antibody (green) was used Alexa Fluor 488. DAPI was stained the cell nucleus (blue).

