

HeLa Lysate

Catalog Number: ATGL0001

PRODUCT INFORMATION

Catalog number

ATGL0001

PRODUCT SPECIFICATION

Concentration

2mg/ml (determined by BCA assay)

Formulation

Liquid in. SDS-PAGE Sample Buffer (0.12M Tris-HCl buffer pH6.8, 0.4% SDS, 5% glycerol, 1% beta-mercaptoethanol, 0.02% Bromophenol blue)

Storage

Aliquot the lysate into single tube and then storing them -80C or below. Avoid repeated freezing and thawing cycles.

Preparation before usage

Heat lysate to 95C for 5 minutes and rapidly cooling before use.

General description

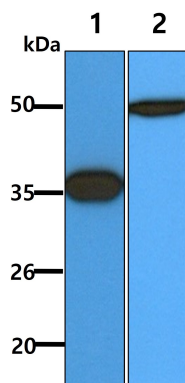
HeLa cells are human epithelial cells from a fatal cervical cancer cells taken from Henrietta Lacks, in 1951. The cell line was found to be remarkably durable and prolific as illustrated by its contamination of many other cell lines used in research. Horizontal gene transfer from human papillomavirus 18 (HPV18) to human cervical cells created the HeLa genome which is different from either parent genome in various ways including its number of chromosomes.

Quality Control

Western Blot analyzed by both GAPDH and Beta tubulin antibody

DATA

Western blot analysis (WB)



All lanes : HeLa Whole Cell Lysate (40ug)

Lane 1. : Anti-GAPDH antibody (ATGA0181)

Lane 2. : Anti-Beta tubulin antibody (ATGA0196)