

293T Lysate

Catalog Number: ATGL0002

PRODUCT INFORMATION

Catalog number

ATGL0002

PRODUCT SPECIFICATION

Concentration

2mg/ml (determined by BCA assay)

Formulation

Liquid in. SDS-PAGE Sample Buffer (0.12M Tris-HCl buffer pH6.8, 0.4% SDS, 5% glycerol, 1% beta-mercaptoethanol, 0.02% Bromophenol blue)

Storage

Aliquot the lysate into single tube and then storing them -80C or below. Avoid repeated freezing and thawing cycles.

Preparation before usage

Heat lysate to 95C for 5 minutes and rapidly cooling before use.

General description

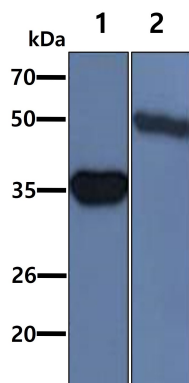
293T cells are a human embryonic kidney (HEK) cell line that expresses the large T antigen. The large T antigen is commonly used for transfection assays and is required for transient transfection of plasmids with an SV40 origin of replication. 293T cells are able to grow well in reduced serum medium or in medium lacking calcium ions. In addition, 293T cells tend to grow at a faster rate and to a higher cell density than the parent 293 cell line, resulting in increased amounts of endogenously expressed protein.

Quality Control

Western Blot analyzed by both GAPDH and Beta tubulin antibody

DATA

Western blot analysis (WB)



All lanes : 293T Whole Cell Lysate (40ug)

Lane 1. : Anti-GAPDH antibody (ATGA0181)

Lane 2. : Anti-Beta tubulin antibody (ATGA0196)