

# HepG2 Lysate

Catalog Number: ATGL0005

## PRODUCT INFORMATION

### Catalog number

ATGL0005

## PRODUCT SPECIFICATION

### Concentration

2mg/ml (determined by BCA assay)

### Formulation

Liquid in. SDS-PAGE Sample Buffer (0.12M Tris-HCl buffer pH6.8, 0.4% SDS, 5% glycerol, 1% beta-mercaptoethanol, 0.02% Bromophenol blue)

### Storage

Aliquot the lysate into single tube and then storing them -80C or below. Avoid repeated freezing and thawing cycles.

### Preparation before usage

Heat lysate to 95C for 5 minutes and rapidly cooling before use.

### General description

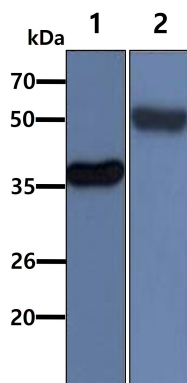
HepG2 cells are immortalized cell line that derived from liver tissue of a 15-year-old boy with hepatocellular carcinoma. HepG2 cells secrete a variety of major plasma proteins such as albumin, transferrin, and secrete acute-phase proteins such as fibrinogen, alpha 2-macroglobulin, alpha 1-antitrypsin, transferrin, and plasminogen. HepG2 have an epithelial morphology and are thought to be a very useful model to study HBV virus replication via transfection. Cells are also used for cancer and apoptosis studies.

### Quality Control

Western Blot analyzed by both GAPDH and Beta tubulin antibody

## DATA

### Western blot analysis (WB)



All lanes : HepG2 Whole Cell Lysate (40ug)

Lane 1. : Anti-GAPDH antibody (ATGA0181)

Lane 2. : Anti-Beta tubulin antibody (ATGA0196)