

TF-1 Lysate

Catalog Number: ATGL0006

PRODUCT INFORMATION

Catalog number

ATGL0006

PRODUCT SPECIFICATION

Concentration

2mg/ml (determined by BCA assay)

Formulation

Liquid in. SDS-PAGE Sample Buffer (0.12M Tris-HCl buffer pH6.8, 0.4% SDS, 5% glycerol, 1% beta-mercaptoethanol, 0.02% Bromophenol blue)

Storage

Aliquot the lysate into single tube and then storing them -80C or below. Avoid repeated freezing and thawing cycles.

Preparation before usage

Heat lysate to 95C for 5 minutes and rapidly cooling before use.

General description

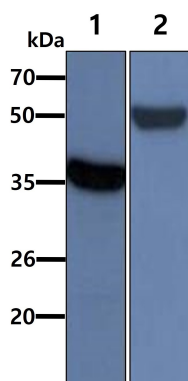
TF-1 cells have been derived from a patient with erythroleukaemia. TF-1 cells are completely dependent on GM-CSF or IL-3 for long term growth. TF-1 cells respond to a variety of other lymphokines and cytokines such as IL-1, IL-4, IL-6, IL-9, IL-11, IL-13, SCF, LIF and NGF. TF-1 cells do not express glycophorin A or carbonyl anhydrase I.

Quality Control

Western Blot analyzed by both GAPDH and Beta tubulin antibody

DATA

Western blot analysis (WB)



All lanes : TF-1 Whole Cell Lysate (40ug)

Lane 1. : Anti-GAPDH antibody (ATGA0181)

Lane 2. : Anti-Beta tubulin antibody (ATGA0196)