

MCF-7 Lysate

Catalog Number: ATGL0009

PRODUCT INFORMATION

Catalog number

ATGL0009

PRODUCT SPECIFICATION

Concentration

2mg/ml (determined by BCA assay)

Formulation

Liquid in. SDS-PAGE Sample Buffer (0.12M Tris-HCl buffer pH6.8, 0.4% SDS, 5% glycerol, 1% beta-mercaptoethanol, 0.02% Bromophenol blue)

Storage

Aliquot the lysate into single tube and then storing them -80C or below. Avoid repeated freezing and thawing cycles.

Preparation before usage

Heat lysate to 95C for 5 minutes and rapidly cooling before use.

General description

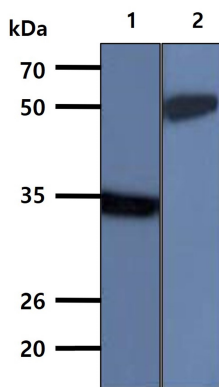
MCF-7 cells are breast cancer cell line isolated in 1970 from a 69 year old woman, in 1970s. MCF-7 cells are a well characterized estrogen receptor (ER) positive control cell line (cells are positive for cytoplasmic estrogen receptors) and therefore are a useful in vitro model of breast cancer to study the role of estrogen in breast cancer. Cells are also positive for cytokeratin and negative for desmin, endothelin, GFAP, neurofilament, vimentin.

Quality Control

Western Blot analyzed by both GAPDH and Beta tubulin antibody

DATA

Western blot analysis (WB)



All lanes : MCF-7 Whole Cell Lysate (40ug)

Lane 1. : Anti-GAPDH antibody (ATGA0181)

Lane 2. : Anti-Beta tubulin antibody (ATGA0196)