

SW480 Lysate

Catalog Number: ATGL0011

PRODUCT INFORMATION

Catalog number

ATGL0011

PRODUCT SPECIFICATION

Concentration

2mg/ml (determined by BCA assay)

Formulation

Liquid in. SDS-PAGE Sample Buffer (0.12M Tris-HCl buffer pH6.8, 0.4% SDS, 5% glycerol, 1% beta-mercaptoethanol, 0.02% Bromophenol blue)

Storage

Aliquot the lysate into single tube and then storing them -80C or below. Avoid repeated freezing and thawing cycles.

Preparation before usage

Heat lysate to 95C for 5 minutes and rapidly cooling before use.

General description

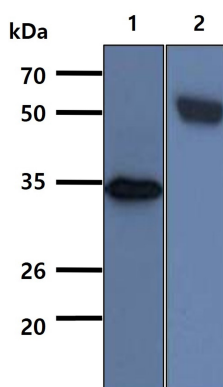
SW480 cells was established from a primary adenocarcinoma of the colon in a 50 year old male. SW480 cells are epithelial like in morphology and used as an in vitro model for colorectal cancer to study tumor markers, CEA production, biochemistry of tumorigenicity, pharmacodynamics, hormone sensibility and as a positive control for the nuclear protein Beta catenin.

Quality Control

Western Blot analyzed by both GAPDH and Beta tubulin antibody

DATA

Western blot analysis (WB)



All lanes : SW480 Whole Cell Lysate (40ug)

Lane 1. : Anti-GAPDH antibody (ATGA0181)

Lane 2. : Anti-Beta tubulin antibody (ATGA0196)