

G-361 Lysate

Catalog Number: ATGL0012

PRODUCT INFORMATION

Catalog number

ATGL0012

PRODUCT SPECIFICATION

Concentration

2mg/ml (determined by BCA assay)

Formulation

Liquid in. SDS-PAGE Sample Buffer (0.12M Tris-HCl buffer pH6.8, 0.4% SDS, 5% glycerol, 1% beta-mercaptoethanol, 0.02% Bromophenol blue)

Storage

Aliquot the lysate into single tube and then storing them -80C or below. Avoid repeated freezing and thawing cycles.

Preparation before usage

Heat lysate to 95C for 5 minutes and rapidly cooling before use.

General description

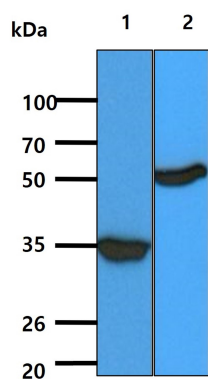
G-361 cells are established from a malignant melanoma of a 31 year-old male. The cells produce melanin for up to 50 population doublings. The Y chromosome could not be detected in this cell line by short tandem repeat (STR) -PCR analysis when tested at ECACC. It is a known phenomenon that due to the increased genetic instability of cancer cell lines the Y chromosome can be rearranged or lost resulting in lack of detection. The cell line is identical to the source provided by the depositor based on the STR-PCR analysis.

Quality Control

Western Blot analyzed by both GAPDH and Beta tubulin antibody

DATA

Western blot analysis (WB)



All lanes : G-361 Whole Cell Lysate (40ug)

Lane 1. : Anti-GAPDH antibody (ATGA0181)

Lane 2. : Anti-Beta tubulin antibody (ATGA0196)