

NIH/3T3 Lysate

Catalog Number: ATGL0017

PRODUCT INFORMATION

Catalog number

ATGL0017

PRODUCT SPECIFICATION

Concentration

2mg/ml (determined by BCA assay)

Formulation

Liquid in. SDS-PAGE Sample Buffer (0.12M Tris-HCl buffer pH6.8, 0.4% SDS, 5% glycerol, 1% beta-mercaptoethanol, 0.02% Bromophenol blue)

Storage

Aliquot the lysate into single tube and then storing them -80C or below. Avoid repeated freezing and thawing cycles.

Preparation before usage

Heat lysate to 95C for 5 minutes and rapidly cooling before use.

General description

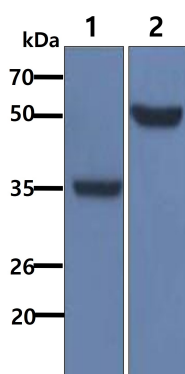
NIH/3T3 cell line was established from NIH Swiss mouse embryo cultures in the same manner as the original random bred 3T3 and the inbred BALB/c 3T3. These cells are highly contact inhibited and are sensitive to sarcoma virus focus formation and leukaemia virus propagation. Cells have now lost their contact inhibition.

Quality Control

Western Blot analyzed by both GAPDH and Beta tubulin antibody

DATA

Western blot analysis (WB)



All lanes : NIH/3T3 Whole Cell Lysate (40ug)

Lane 1. : Anti-GAPDH antibody (ATGA0181)

Lane 2. : Anti-Beta tubulin antibody (ATGA0196)