

3T3-L1 Lysate

Catalog Number: ATGL0021

PRODUCT INFORMATION

Catalog number

ATGL0021

PRODUCT SPECIFICATION

Concentration

2mg/ml (determined by BCA assay)

Formulation

Liquid in. SDS-PAGE Sample Buffer (0.12M Tris-HCl buffer pH6.8, 0.4% SDS, 5% glycerol, 1% beta-mercaptoethanol, 0.02% Bromophenol blue)

Storage

Aliquot the lysate into single tube and then storing them -80C or below. Avoid repeated freezing and thawing cycles.

Preparation before usage

Heat lysate to 95C for 5 minutes and rapidly cooling before use.

General description

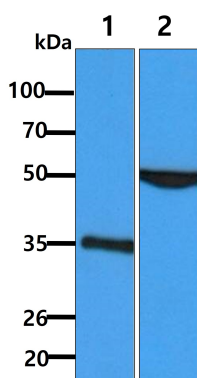
3T3-L1 cell line was derived from mouse 3T3 cells that is used in biological research on adipose tissue. 3T3-L1 cells have a fibroblast-like morphology, but, under appropriate conditions, the cells differentiate into an adipocyte-like phenotype. 3T3-L1 cells of the adipocyte morphology increase the synthesis and accumulation of triglycerides and acquire the signet ring appearance of adipose cells. These cells are also sensitive to lipogenic and lipolytic hormones and drugs, including epinephrine, isoproterenol, and insulin. 3T3-L1 cells are extensively used to study adipogenesis.

Quality Control

Western Blot analyzed by both GAPDH and Beta tubulin antibody

DATA

Western blot analysis (WB)



All lanes : 3T3-L1 Whole Cell Lysate (40ug)

Lane 1. : Anti-GAPDH antibody (ATGA0181)

Lane 2. : Anti-Beta tubulin antibody (ATGA0196)