

# C3H/101/2 Lysate

Catalog Number: ATGL0022

## PRODUCT INFORMATION

### Catalog number

ATGL0022

## PRODUCT SPECIFICATION

### Concentration

2mg/ml (determined by BCA assay)

### Formulation

Liquid in. SDS-PAGE Sample Buffer (0.12M Tris-HCl buffer pH6.8, 0.4% SDS, 5% glycerol, 1% beta-mercaptoethanol, 0.02% Bromophenol blue)

### Storage

Aliquot the lysate into single tube and then storing them -80C or below. Avoid repeated freezing and thawing cycles.

### Preparation before usage

Heat lysate to 95C for 5 minutes and rapidly cooling before use.

### General description

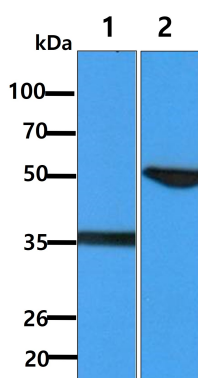
C3H/10T1/2 cell line was isolated in 1972 from a line of C3H mouse embryo cells. The cells are contact sensitive and there is no detectable background spontaneous transformation. They are highly susceptible to transformation by chemical agents and express H-2k antigen. Tested and found negative for ectromelia virus.

### Quality Control

Western Blot analyzed by both GAPDH and Beta tubulin antibody

## DATA

### Western blot analysis (WB)



All lanes : C3H/101/2 Whole Cell Lysate (40ug)

Lane 1. : Anti-GAPDH antibody (ATGA0181)

Lane 2. : Anti-Beta tubulin antibody (ATGA0196)