

TE-2 Lysate

Catalog Number: ATGL0024

PRODUCT INFORMATION

Catalog number

ATGL0024

PRODUCT SPECIFICATION

Concentration

2mg/ml (determined by BCA assay)

Formulation

Liquid in. SDS-PAGE Sample Buffer (0.12M Tris-HCl buffer pH6.8, 0.4% SDS, 5% glycerol, 1% beta-mercaptoethanol, 0.02% Bromophenol blue)

Storage

Aliquot the lysate into single tube and then storing them -80C or below. Avoid repeated freezing and thawing cycles.

Preparation before usage

Heat lysate to 95C for 5 minutes and rapidly cooling before use.

General description

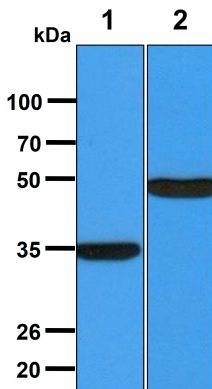
TE-2 cells are derived from human squamous cell carcinoma of the esophagus. The TE cell line series are established in late 1970s and early 1980s by Nishihira et al. in Japan, is one of the first esophageal cancer cell line series that was used throughout the world. Cancer of the esophagus is the seventh leading cause of cancer death worldwide. Esophageal carcinoma cell lines are useful models to study the biological and genetic alterations in these tumors.

Quality Control

Western Blot analyzed by both GAPDH and Beta tubulin antibody

DATA

Western blot analysis (WB)



All lanes : TE-2 Whole Cell Lysate (40ug)

Lane 1. : Anti-GAPDH antibody (ATGA0181)

Lane 2. : Anti-Beta tubulin antibody (ATGA0196)