

B16-F10 Lysate

Catalog Number: ATGL0025

PRODUCT INFORMATION

Catalog number

ATGL0025

PRODUCT SPECIFICATION

Concentration

2mg/ml (determined by BCA assay)

Formulation

Liquid in. SDS-PAGE Sample Buffer (0.12M Tris-HCl buffer pH6.8, 0.4% SDS, 5% glycerol, 1% beta-mercaptoethanol, 0.02% Bromophenol blue)

Storage

Aliquot the lysate into single tube and then storing them -80C or below. Avoid repeated freezing and thawing cycles.

Preparation before usage

Heat lysate to 95C for 5 minutes and rapidly cooling before use.

General description

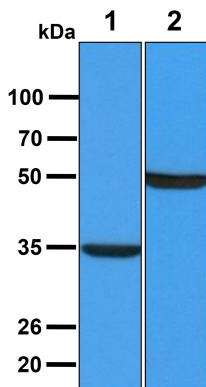
B16-F10 cells are derived from mouse skin melanoma. B16 melanoma cell line and its sublines are well-established models for the study of experimental cancer therapies. Melanomas express different tumor-associated Ags, which are potential targets for novel designs of therapeutic cancer vaccines. Many immunotherapeutic protocols have been tested using the B16 cell line. Growth of B16 cells can be controlled in vivo by different classes of specific or nonspecific immune effector cells.

Quality Control

Western Blot analyzed by both GAPDH and Beta tubulin antibody

DATA

Western blot analysis (WB)



All lanes : B16-F10 Whole Cell Lysate (40ug)

Lane 1. : Anti-GAPDH antibody (ATGA0181)

Lane 2. : Anti-Beta tubulin antibody (ATGA0196)