

Raw264.7 Lysate

Catalog Number: ATGL0026

PRODUCT INFORMATION

Catalog number

ATGL0026

PRODUCT SPECIFICATION

Concentration

2mg/ml (determined by BCA assay)

Formulation

Liquid in. SDS-PAGE Sample Buffer (0.12M Tris-HCl buffer pH6.8, 0.4% SDS, 5% glycerol, 1% beta-mercaptoethanol, 0.02% Bromophenol blue)

Storage

Aliquot the lysate into single tube and then storing them -80C or below. Avoid repeated freezing and thawing cycles.

Preparation before usage

Heat lysate to 95C for 5 minutes and rapidly cooling before use.

General description

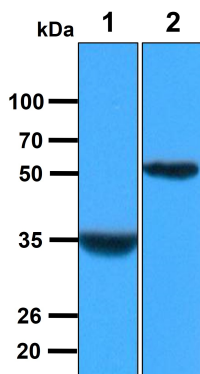
Raw264.7 cells are established from ascites of a tumour induced in a male mouse by intraperitoneal injection of Abselon Leukaemia Virus (A-MuLV). This line does not secrete detectable virus particles and is negative in the XC plaque formation assay. Cells will pinocytose neutral red and phagocytose zymosan. Cells capable of antibody dependent lysis of sheep erythrocytes and tumour targets. Growth inhibited by LPS.

Quality Control

Western Blot analyzed by both GAPDH and Beta tubulin antibody

DATA

Western blot analysis (WB)



All lanes : Raw264.7 Whole Cell Lysate (40ug)

Lane 1. : Anti-GAPDH antibody (ATGA0181)

Lane 2. : Anti-Beta tubulin antibody (ATGA0196)