

CHO-K1 Lysate

Catalog Number: ATGL0027

PRODUCT INFORMATION

Catalog number

ATGL0027

PRODUCT SPECIFICATION

Concentration

2mg/ml (determined by BCA assay)

Formulation

Liquid in. SDS-PAGE Sample Buffer (0.12M Tris-HCl buffer pH6.8, 0.4% SDS, 5% glycerol, 1% beta-mercaptoethanol, 0.02% Bromophenol blue)

Storage

Aliquot the lysate into single tube and then storing them -80C or below. Avoid repeated freezing and thawing cycles.

Preparation before usage

Heat lysate to 95C for 5 minutes and rapidly cooling before use.

General description

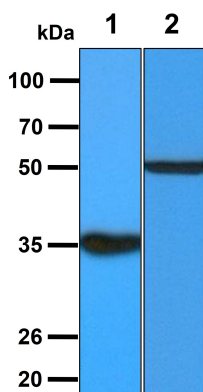
CHO-K1 cells are derived from the ovary of an adult Chinese hamster, often used in biological and medical research and commercially in the production of therapeutic proteins. They were introduced in the 1960s, are grown as a cultured monolayer and require the amino acid proline in their culture medium. CHO-K1 cells are used in studies of genetics, toxicity screening, nutrition and gene expression, particularly to express recombinant proteins. Today, CHO cells are the most commonly used mammalian hosts for industrial production of recombinant protein therapeutics.

Quality Control

Western Blot analyzed by both GAPDH and Beta tubulin antibody

DATA

Western blot analysis (WB)



All lanes : CHO-K1 Whole Cell Lysate (40ug)

Lane 1. : Anti-GAPDH antibody (ATGA0181)

Lane 2. : Anti-Beta tubulin antibody (ATGA0196)