

K562 Lysate

Catalog Number: ATGL0029

PRODUCT INFORMATION

Catalog number

ATGL0029

PRODUCT SPECIFICATION

Concentration

2mg/ml (determined by BCA assay)

Formulation

Liquid in. SDS-PAGE Sample Buffer (0.12M Tris-HCl buffer pH6.8, 0.4% SDS, 5% glycerol, 1% beta-mercaptoethanol, 0.02% Bromophenol blue)

Storage

Aliquot the lysate into single tube and then storing them -80C or below. Avoid repeated freezing and thawing cycles.

Preparation before usage

Heat lysate to 95C for 5 minutes and rapidly cooling before use.

General description

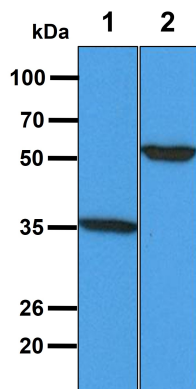
K-562 is an erythroleukemia cell line derived from a chronic myeloid leukemia patient in blast crisis. Recent studies have shown the K562 blasts are multipotential, hematopoietic malignant cells that spontaneously differentiate into recognisable progenitors of the erythrocyte, granulocyte and monocytic series. Cells are also used for haemoglobin synthesis, antitumour testing, tumorigenicity, differentiation, pharmacodynamics, cloning, cytotoxicity, cell biology, cellular effects of hyperthermia, and natural killer assays.

Quality Control

Western Blot analyzed by both GAPDH and Beta tubulin antibody

DATA

Western blot analysis (WB)



All lanes : K562 Whole Cell Lysate (40ug)

Lane 1. : Anti-GAPDH antibody (ATGA0181)

Lane 2. : Anti-Beta tubulin antibody (ATGA0196)