

HT1080 Lysate

Catalog Number: ATGL0032

PRODUCT INFORMATION

Catalog number

ATGL0032

PRODUCT SPECIFICATION

Concentration

2mg/ml (determined by BCA assay)

Formulation

Liquid in. SDS-PAGE Sample Buffer (0.12M Tris-HCl buffer pH6.8, 0.4% SDS, 5% glycerol, 1% beta-mercaptoethanol, 0.02% Bromophenol blue)

Storage

Aliquot the lysate into single tube and then storing them -80C or below. Avoid repeated freezing and thawing cycles.

Preparation before usage

Heat lysate to 95C for 5 minutes and rapidly cooling before use.

General description

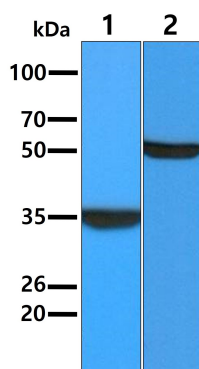
HT1080 is a fibrosarcoma cell line which has been used extensively in biomedical research. HT-1080 cell line are derived from tissue taken in a biopsy of a fibrosarcoma present in a 35 year-old male. The patient who supplied the sample had not undergone radio or chemotherapy and this lack of therapy is important as both radio and chemotherapy may introduce unwanted mutations into the sample.

Quality Control

Western Blot analyzed by both GAPDH and Beta tubulin antibody

DATA

Western blot analysis (WB)



All lanes : HT1080 Whole Cell Lysate (40ug)

Lane 1. : Anti-GAPDH antibody (ATGA0181)

Lane 2. : Anti-Beta tubulin antibody (ATGA0196)