

CTLL-2 Lysate

Catalog Number: ATGL0033

PRODUCT INFORMATION

Catalog number

ATGL0033

PRODUCT SPECIFICATION

Concentration

2mg/ml (determined by BCA assay)

Formulation

Liquid in. SDS-PAGE Sample Buffer (0.12M Tris-HCl buffer pH6.8, 0.4% SDS, 5% glycerol, 1% beta-mercaptoethanol, 0.02% Bromophenol blue)

Storage

Aliquot the lysate into single tube and then storing them -80C or below. Avoid repeated freezing and thawing cycles.

Preparation before usage

Heat lysate to 95C for 5 minutes and rapidly cooling before use.

General description

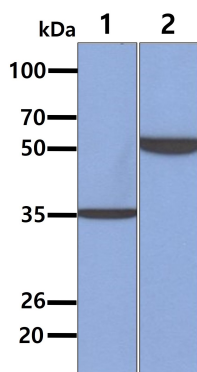
CTLL-2 cell line was a subclone of cytotoxic T-cells derived from a C57bl/6 mouse. CTLL-2 cells require IL-2 for growth and are used to assay for its presence in conditioned media. CTLL-2 cells are used also for the detection of many factors in cytokine assay.

Quality Control

Western Blot analyzed by both GAPDH and Beta tubulin antibody

DATA

Western blot analysis (WB)



All lanes : CTLL-2 Whole Cell Lysate (40ug)

Lane 1. : Anti-GAPDH antibody (ATGA0181)

Lane 2. : Anti-Beta tubulin antibody (ATGA0196)