

MDA-MB-231 Lysate

Catalog Number: ATGL0035

PRODUCT INFORMATION

Catalog number

ATGL0035

PRODUCT SPECIFICATION

Concentration

2mg/ml (determined by BCA assay)

Formulation

Liquid in. SDS-PAGE Sample Buffer (0.12M Tris-HCl buffer pH6.8, 0.4% SDS, 5% glycerol, 1% beta-mercaptoethanol, 0.02% Bromophenol blue)

Storage

Aliquot the lysate into single tube and then storing them -80C or below. Avoid repeated freezing and thawing cycles.

Preparation before usage

Heat lysate to 95C for 5 minutes and rapidly cooling before use.

General description

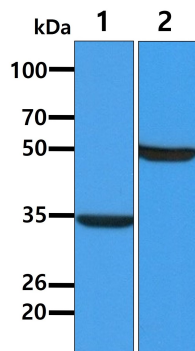
MDA-MB-231 cell line was metastatic human breast cancer cell line originally isolated from pleural effusions of a breast cancer patient in the early 1970s. MDA-MB-231 cells possess epithelial-like morphology and exhibit invasive properties when cultured in vitro and when transplanted into mice. MDA-MB-231 is widely used as a model for estrogen receptor negative breast cancer with applications in the study of tumorigenicity, metastasis, and cell invasion.

Quality Control

Western Blot analyzed by both GAPDH and Beta tubulin antibody

DATA

Western blot analysis (WB)



All lanes : MDA-MB-231 Whole Cell Lysate (40ug)

Lane 1. : Anti-GAPDH antibody (ATGA0181)

Lane 2. : Anti-Beta tubulin antibody (ATGA0196)