

KG-1 Lysate

Catalog Number: ATGL0036

PRODUCT INFORMATION

Catalog number

ATGL0036

PRODUCT SPECIFICATION

Concentration

2mg/ml (determined by BCA assay)

Formulation

Liquid in. SDS-PAGE Sample Buffer (0.12M Tris-HCl buffer pH6.8, 0.4% SDS, 5% glycerol, 1% beta-mercaptoethanol, 0.02% Bromophenol blue)

Storage

Aliquot the lysate into single tube and then storing them -80C or below. Avoid repeated freezing and thawing cycles.

Preparation before usage

Heat lysate to 95C for 5 minutes and rapidly cooling before use.

General description

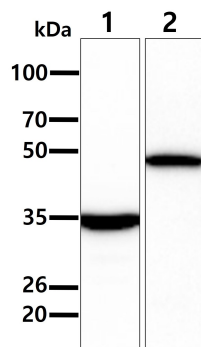
KG-1 cell line derived from the bone marrow aspirate of a 59 year old male Caucasian with erythroleukemia that became acute myelogenous leukaemia. KG-1 cells resemble acute myelogenous leukaemia showing considerable pleomorphism with a predominance of myeloblasts and promyelocytes. A small percentage of the cells are mature granulocytes with the occasional presence of macrophages and eosinophils. They do not express surface Ig or EBV antigens and lack specific markers for lymphocytic cells.

Quality Control

Western Blot analyzed by both GAPDH and Beta tubulin antibody

DATA

Western blot analysis (WB)



All lanes : KG-1 Whole Cell Lysate (40ug)

Lane 1. : Anti-GAPDH antibody (ATGA0181)

Lane 2. : Anti-Beta tubulin antibody (ATGA0196)