

Recombinant C.elegans SNAP25 protein

Catalog Number: SNP3001

PRODUCT INFORMATION

Expression system

E.coli

Domain

1-207aa

UniProt No.

O62414

NCBI Accession No.

NP_505641.2

Alternative Names

Resistance to Inhibitors of Cholinesterase family member, SNAP25, SNAP-25, Synaptosomal-associated protein 25kDa, FLJ23079, RIC-4, RIC4, SEC9, SNAP 25, bA416N4.2, dj1068F16.2, SuP, resistance to inhibitors of cholinesterase 4 homolog, super protein, synaptosomal-associated 25 kDa protein, synaptosomal-associated protein 25, RIC 4

PRODUCT SPECIFICATION

Molecular Weight

23 kDa (207aa) confirmed by MALDI-TOF

Concentration

1mg/ml (determined by Bradford assay)

Formulation

Liquid in. 20mM Tris-HCl buffer (pH 7.5) containing 50mM NaCl, 5m MDTT, 1mM EDTA, 10%glycerol

Purity

> 95% by SDS-PAGE

Tag

Non-Tagged

Application

SDS-PAGE

Storage Condition

Can be stored at +2C to +8C for 1 week. For long term storage, aliquot and store at -20C to -80C. Avoid repeated freezing and thawing cycles.

BACKGROUND

Description

SNAP-25 is a presynaptic plasma membrane protein essential for synaptic vesicle fusion and neurotransmitter release. The membrane proteins SNAP-25, synaptobrevin and syntaxin make up the core complex (SNARE) essential for docking and holding synaptic vesicles at the pre synaptic membrane. SNAP-25 gene was amplified

Recombinant *C.elegans* SNAP25 protein

Catalog Number: SNP3001

by PCR from *C. elegans* and cloned into an *E. coli* expression vector. SNAP-25 was purified by using conventional chromatography techniques.

Amino acid Sequence

MSGDDDIPEG LEAINLKMNA TTDDSLESTR RMLALCEESK EAGIKTLVML DDQGEQLERC EGALDTINQD MKEAEDHLKG
MEKCCGLCVL PWNKTDDFEK TEFAKAWKKD DDGGVISDQP RITVGDSSMG PQGGYITKIT NDAREDEMDE
NVQQVSTMVG NLRNMAIDMS TEVSNQNRQL DRIHDKAQSN EVRVESANKR AKNLITK

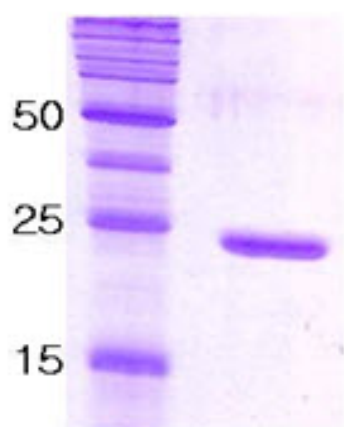
General References

Saifee O., et al. (1998) *Mol.Biol.Cell* 9(6):1235-52.

Yang Y., et al. (2000) . 275(38):29482-7.

DATA

SDS-PAGE



15% SDS-PAGE (3ug)

3ug by SDS-PAGE under reducing condition and visualized by coomassie blue stain.