

Recombinant human alpha-Synuclein E46K protein

Catalog Number: SNA4001

PRODUCT INFORMATION

Expression system

E.coli

Domain

1-140aa

UniProt No.

P37840

NCBI Accession No.

NP_000336.1

Alternative Names

SNCA, NACP, PARK1, PARK4, PD1, α -synuclein Non-A beta component of AD amyloid, Non-A4 component of amyloid precursor, Parkinson disease 4, autosomal dominant Lewy body

PRODUCT SPECIFICATION

Molecular Weight

14.4 (140aa) confirmed by MALDI-TOF (Molecular weight on SDS-PAGE will appear higher)

Concentration

1mg/ml (determined by BCA assay)

Formulation

Liquid in. 20mM Tris-HCl buffer (pH 7.5) containing 0.1M NaCl

Purity

> 95% by SDS-PAGE

Tag

Non-Tagged

Application

SDS-PAGE

Storage Condition

Can be stored at +2C to +8C for 1 week. For long term storage, aliquot and store at -20C to -80C. Avoid repeated freezing and thawing cycles.

BACKGROUND

Description

alpha-Synuclein E46K is a mutant form of alpha-synuclein which is changed at position 46 from glutamate (E) to lysine (K). Recent studies have shown that this mutant (E46K) of alpha-synuclein causes Parkinson and Lewy Body dementia (DLB). alpha-Synuclein E46K was overexpressed in E. coli and purified to apparent homogeneity by using conventional column chromatography techniques

Recombinant human alpha-Synuclein E46K protein

Catalog Number: SNA4001

Amino acid Sequence

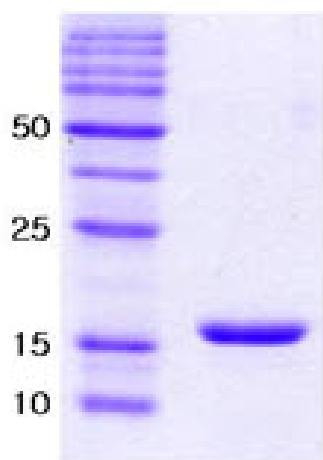
MDVFMKGLSK AKEGVVAAA E KTKQGVAAA GKTKEGVLYV GSKTKKGVVH GVATVAEKT EQVTNVGGAV
VTGVTAVAQK TVEGAGSIAA ATGFVKKDQL GKNEEGAPQE GILEDMPVDP DNEAYEMPSE EGYQDYEPEA

General References

Juan J.Zarranz, . (2004) Ann. Neurol. 55, 164-173.

DATA

SDS-PAGE



3ug by SDS-PAGE under reducing condition and visualized by coomassie blue stain.

15% SDS-PAGE (3ug)