

Recombinant human AHA1 protein

Catalog Number: AHA0701

PRODUCT INFORMATION

Expression system

E.coli

Domain

19-337aa

UniProt No.

O95433

NCBI Accession No.

NP_036243

Alternative Names

Activator of Hsp90 ATPase-1 (AHA1, 19-337), AHA1, AHSA1, Activator of Hsp90 ATPase protein 1, Hsp90 co-chaperone AHA1, Activator of Hsp90 ATPase-1 Activator of 90 kDa heat shock protein ATPase homolog 1, Activator of heat shock 90kDa protein ATPase homolog 1, C14orf3, HSPC322, p38

PRODUCT SPECIFICATION

Molecular Weight

36.1 kDa (320aa) confirmed by MALDI-TOF

Concentration

1mg/ml (determined by Bradford assay)

Formulation

Liquid in. 20mM Tris-HCl buffer (pH 8.0) containing 2mM EDTA

Purity

> 95% by SDS-PAGE

Endotoxin level

< 1 EU per 1ug of protein (determined by LAL method)

Tag

Non-Tagged

Application

SDS-PAGE

Storage Condition

Can be stored at +2C to +8C for 1 week. For long term storage, aliquot and store at -20C to -80C. Avoid repeated freezing and thawing cycles.

BACKGROUND

Description

The co-chaperone Aha1 (Activator of HSP90 ATPase-1) binds the middle domain of Hsp90 (amino acid 272-627) and is proposed to function as an ATPase-activating protein that competes with p23 and other co-chaperones for

Recombinant human AHA1 protein

Catalog Number: AHA0701

Hsp90 binding. Recombinant Aha1 was expressed in E. coli and purified by using conventional chromatography techniques.

Amino acid Sequence

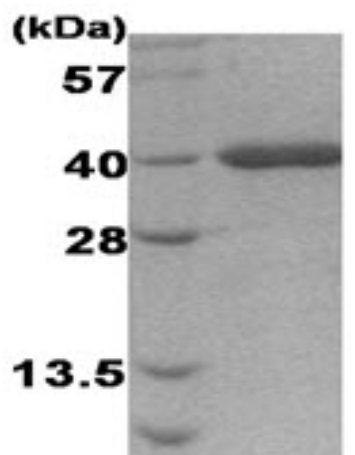
MATNVNNNWHW TERDASNWST DKLKTLFLAV QVQNEEGKCE VTEVSKLDGE ASINNRKGKL IFFYEWSVKL NWTGTSKSGV
QYKGGHVEIPN LSDENSVDEV EISVSLAKDE PDTNLVALMK EEGVKLLREA MGIYISTLKT EFTQGMILPT MNGESVDPVG
QPALKTEERK AKPAPSKTQA RPVGVKIPTC KITLKETFLT SPEELYRVFT TQELVQAFTH APATLEADRG GKFHMVDGNV
SGEFTDLVPE KHIVMKWRFK SWPEGHFATI TLTFIDKNGE TELCMEGRGI PAPEEERTRQ GWQRYFFEGI KQTFGYGARL

General References

Meyer P., et al (2004). EMBO 23(6): 1402-10
Siligardi G., et al (2004). J Biol Chem. 270(50): 51989-98

DATA

SDS-PAGE



3ug by SDS-PAGE under reducing condition and visualized by coomassie blue stain.

15% SDS-PAGE (3ug)