

# Recombinant human PP2C gamma/PPM1G protein

Catalog Number: PPG0801

## PRODUCT INFORMATION

---

### Expression system

E.coli

### Domain

317-546aa

### UniProt No.

O15355

### NCBI Accession No.

NP\_002698

## PRODUCT SPECIFICATION

---

### Molecular Weight

27 kDa (250aa) confirmed by MALDI-TOF

### Concentration

1mg/ml (determined by Bradford assay)

### Formulation

Liquid in. 25mM Tris-HCl buffer (pH 7.5) containing 1mM DTT, 1mM EDTA, 2mM beta-mercaptoethanol, 20% glycerol

### Purity

> 90% by SDS-PAGE

### Tag

His-Tag

### Application

SDS-PAGE

### Storage Condition

Can be stored at +2C to +8C for 1 week. For long term storage, aliquot and store at -20C to -80C. Avoid repeated freezing and thawing cycles.

## BACKGROUND

---

### Description

PPM1G (Protein phosphatase 1G) is a member of the PP2C family of Serine/threonine protein phosphatases. PP2C family members are known to be negative regulators of cell stress response pathways. The human Ser/Thr phosphatase PPM1G promotes spliceosome assembly. This phosphatase is found to be responsible for the dephosphorylation of Pre-mRNA splicing factors, which is important for the formation of functional spliceosome. Recombinant human PPM1G, fused to His-tag at N-terminus, was expressed in E. coli and purified by conventional chromatography techniques.

# Recombinant human PP2C gamma/PPM1G protein

Catalog Number: PPG0801

## Amino acid Sequence

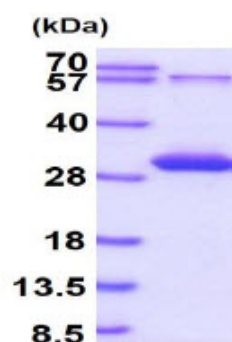
MGSSHHHHHH SSGLVPRGSH MEGKEEPGSD SGTTAVVALI RGKQLIVANA GDSRCVSEA GKALDMSYDH KPEDEVELAR  
IKNAGGKVTM DGRVNGGLNL SRAIGDHFYK RNKNLPPEEQ MISALPDIKV LTLTDDHEFM VIACDGIWNV MSSQEVVDFI  
QSKISQRDEN GELRLLSSIV EELLQCLAP DTSGDGTGCD NMTCCIICFK PRNTAELQPE SGKRKLEEV L STEGAEENGN  
SDK K K K K A K R D

## General References

Marc Flajolet., et al. (2004). Proc. Natl. Acad. Sci. 100(26):16006-11.  
Suh E.J., et al. (2007). FEBS Lett. 580 (26):6100-4.

## DATA

### SDS-PAGE



15% SDS-PAGE (3ug)

3ug by SDS-PAGE under reducing condition and visualized by coomassie blue stain.