

Recombinant human ISG15 protein

Catalog Number: ISG0801

PRODUCT INFORMATION

Expression system

E.coli

Domain

1-157aa

UniProt No.

P05161

NCBI Accession No.

NP_005092.1

Alternative Names

Interferon-stimulated gene 15 kDa ubiquitin-like modifier, GIP2, uCRP, IFI15, ISG15, Interferon-stimulated gene, 15 kDa ubiquitin-like modifier, Interferon-stimulated gene, 15 kDa ubiquitin-like modifier IFI 15, Interferon alpha inducible protein, Interferon induced 15 kDa protein, Interferon induced 17 kDa protein, Interferon induced 17 kDa/15 kDa protein, Interferon Stimulated Gene 15, Interferon stimulated protein 15 kDa, ISG 15, ISG15 ubiquitin like modifier, ubiquitin cross reactive protein precursor.

PRODUCT SPECIFICATION

Molecular Weight

34 kDa (308aa) confirmed by MALDI-TOF

Concentration

1mg/ml (determined by Bradford assay)

Formulation

Liquid in. 20mM Tris-HCl buffer (pH 8.0) containing 0.1M NaCl, 1mM DTT

Purity

> 98% by SDS-PAGE

Tag

Calmodulin Tag

Application

SDS-PAGE

Storage Condition

Can be stored at +2C to +8C for 1 week. For long term storage, aliquot and store at -20C to -80C. Avoid repeated freezing and thawing cycles.

BACKGROUND

Description

The interferon-stimulated gene, 15 kDa (ISG15) is an interferon regulated gene that is induced as a primary response to diverse microbial and cell stress stimuli, and encodes the founding member of the ubiquitin-like

Recombinant human ISG15 protein

Catalog Number: ISG0801

protein family. ISG15 shares several common properties with other ubiquitin-like molecules (uBLs), but its activity is tightly regulated by specific signaling pathways that have a role in innate immunity. Recombinant human ISG15 was expressed in *E. coli* and purified by conventional chromatography techniques.

Amino acid Sequence

<MADQLTEEQI AEFKEAFSLF DKDGDGTITT KELGTVMRSL QQNPTAEELQ DMINEVDADG NGTIDFPEFL TMMARKMKDT
DSEEEIREAF RVFDKDGNGY ISAAELRHVM TNLGEKLTDE EVDEMIREAD IDGDGQVNYE EFVQMMTAKG
S>MGWDLTVKM LAGNEFQVSL SSSMSVSELK AQITQKIGVH AFQORLAVHP SGVALQDRVP LASQGLGPGS
TVLLVVDKCD EPLNILVRNN KGRSSTYEVV LTQTV AHLKQ QVSGLEGVQD DLFWLT FEGK PLEDQLPLGE YGLKPLSTVF
MNLRLRGG

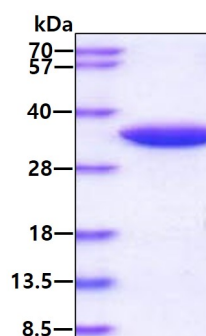
General References

Narasimhan J., et al. (2005) *J Biol Chem.* 280(29):27356-65.

Andersen JB., et al. (2006) *Cytokine Growth Factor Rev.* 17(6):411-21

DATA

SDS-PAGE



3 μ g by SDS-PAGE under reducing condition and visualized by coomassie blue stain.