

# Recombinant human Ferritin heavy chain 1/FTH1 protein

Catalog Number: FTH0901

## PRODUCT INFORMATION

---

**Expression system**

E.coli

**Domain**

1-183aa

**UniProt No.**

P02794

**NCBI Accession No.**

NP\_002023.2

**Alternative Names**

Ferritin heavy chain, Ferritin H subunit, Ferritin, Heavy polypeptide 1, Cell proliferation-inducing gene 15 protein, N-terminally processed, FTH, FTHL6, PIG15, PLIF, FHC, Apoferritin, Placenta immunoregulatory factor

## PRODUCT SPECIFICATION

---

**Molecular Weight**

21 kDa (183aa) confirmed by MALDI-TOF

**Concentration**

1mg/ml (determined by Bradford assay)

**Formulation**

Liquid in. 20mM Tris-HCl buffer (pH 7.5) containing, 10% glycerol, 1mM DTT

**Purity**

&gt; 95% by SDS-PAGE

**Tag**

Non-Tagged

**Application**

SDS-PAGE

**Storage Condition**

Can be stored at +2C to +8C for 1 week. For long term storage, aliquot and store at -20C to -80C. Avoid repeated freezing and thawing cycles.

## BACKGROUND

---

**Description**

Ferritin, heavy polypeptide 1 (FTH1) is a ubiquitous protein which plays a major role in iron sequestration, detoxification and storage. FTH1 is found in all living species. FTH1 encodes the heavy subunit of ferritin, the major intracellular iron storage protein in prokaryotes and eukaryotes. It is composed of 24 subunits of the heavy and light ferritin chains. Recombinant FTH1 protein was expressed in E. coli and purified by using conventional chromatography techniques.

# Recombinant human Ferritin heavy chain 1/FTH1 protein

Catalog Number: FTH0901

## Amino acid Sequence

MTTASTSQVR QNYHQDSEAA INRQINLELY ASYVYLSMSY YFDRDDVALK NFAKYFLHQS HEEREHAEKL MKLQNQRGGR  
IFLQDIKKPD CDDWESGLNA MECALHLEKN VNQSLLELHK LATDKNDPHL CDFIETHYLN EQVKAIKELG DHVTNLRKMG  
APESGLAEYL FDKHTLGDS D NES

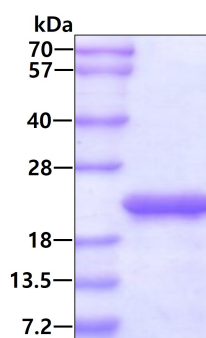
## General References

Percy ME., et al. (1998).Analyst. 123(1):41-50  
Levens E., et al. (2005).Mol Hum Reprod. 11(7):489-94

## DATA

---

### SDS-PAGE



3ug by SDS-PAGE under reducing condition and visualized by coomassie blue stain.