

# Recombinant human SNAP23 protein

Catalog Number: SNP0901

## PRODUCT INFORMATION

---

**Expression system**

E.coli

**Domain**

1-211aa

**UniProt No.**

O00161

**NCBI Accession No.**

NP\_003816.2

**Alternative Names**

Synaptosomal-associated protein 23 isoform SNAP23A, SNAP23A, SNAP23B, HsT17016, SNAP23, Synaptosomal-associated protein 23 isoform SNAP23A, Synaptosomal-associated protein 23 isoform SNAP23A SNAP 23, Synaptosomal associated protein, Synaptosomal associated protein 23, Synaptosomal associated protein 23kDa, Vesicle membrane fusion protein SNAP 23, Vesicle membrane fusion protein SNAP23.

## PRODUCT SPECIFICATION

---

**Molecular Weight**

23.3 kDa (211aa) confirmed by MALDI-TOF

**Concentration**

1mg/ml (determined by Bradford assay)

**Formulation**

Liquid in. 20mM Tris-HCl buffer (pH 8.0)

**Purity**

&gt; 90% by SDS-PAGE

**Tag**

Non-Tagged

**Application**

SDS-PAGE

**Storage Condition**

Can be stored at +2C to +8C for 1 week. For long term storage, aliquot and store at -20C to -80C. Avoid repeated freezing and thawing cycles.

## BACKGROUND

---

**Description**

SNAP23, a non-neuronal SNAP25 homologue, is a target SNARE ubiquitously expressed on the plasma membrane and other intracellular membranes. SNAP23 is widely believed to involve in exocytotic membrane fusion in most cells that do not express SNAP-25. Recombinant SNAP23 protein was expressed in E. coli and purified by using

# Recombinant human SNAP23 protein

Catalog Number: SNP0901

conventional chromatography techniques.

## Amino acid Sequence

MDNLSSEEIQ QRAHQITDES LESTRILGL AIESQDAGIK TITMLDEQKE QLNRIEGLD QINKDMRETE KLTTELNKCC  
GLCVPCNRT KNFESGKAYK TTWGDGGENS PCNVVSKQPG PVTNGQLQQP TTGAASGGYI KRITNDARED EMEENLTQVG  
SILGNLKDMA LNIGNEIDAQ NPQIKRITDK ADTNRDRIDI ANARAKKLID S

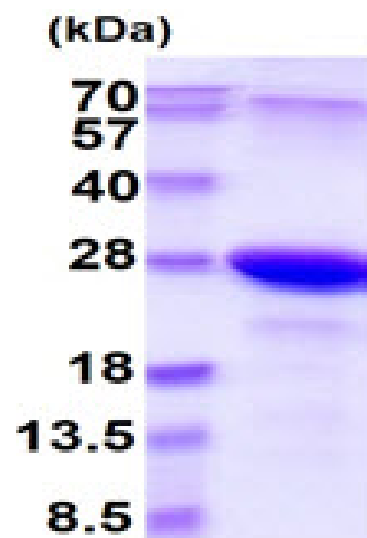
## General References

Okayama M., et al. (2007) FEBS Lett. 581(24):4583-8

Faigle W., et al. (2000) Mol Biol Cell. 11(10):3485-94

## DATA

### SDS-PAGE



3ug by SDS-PAGE under reducing condition and visualized by coomassie blue stain.

15% SDS-PAGE (3ug)