

# Recombinant human Syntaphilin protein

Catalog Number: SNP0902

## PRODUCT INFORMATION

---

### Expression system

E.coli

### Domain

1-424aa

### UniProt No.

O15079

### NCBI Accession No.

NP\_055538.2

### Alternative Names

SNPH, Syntaphilin, KIAA0374.

## PRODUCT SPECIFICATION

---

### Molecular Weight

48.2 KDa (444aa)

### Concentration

1mg/ml (determined by Bradford assay)

### Formulation

Liquid in. 20mM Tris-HCl buffer (pH 8.0) containing 1mM DTT, 10 % glycerol

### Purity

> 85% by SDS-PAGE

### Tag

His-Tag

### Application

SDS-PAGE

### Storage Condition

Can be stored at +2C to +8C for 1 week. For long term storage, aliquot and store at -20C to -80C. Avoid repeated freezing and thawing cycles.

## BACKGROUND

---

### Description

Syntaphilin is a neuron-specific protein initially characterized as a binding partner of syntaxin-1. The protein competes with SNAP-25 for binding to syntaxin-1 and prevents the formation of the SNARE core complex, thereby controlling free syntaxin-1 availability for the assembly of the SNARE complex and potentially regulating synaptic vesicle exocytosis. Recombinant Syntaphilin protein was expressed in E. coli and purified by using conventional chromatography techniques.

# Recombinant human Syntaphilin protein

Catalog Number: SNP0902

## Amino acid Sequence

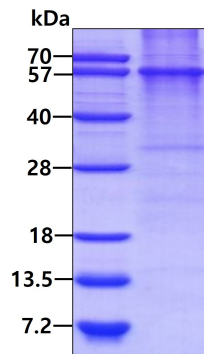
<MGSSHHHHHH SSGLVPRGSH> MAMSLPGSRR TSAGSRRRTS PPVSVRDAYG TSSLSSSSNS GSYKGSDDSP  
TPRRSMKYTL CSDNHGIKPP TPEQYLTLQ QKEVCIRHLK ARLKDTQDRL QDRDTEIDDL KTQLSRMQED WIEEECHRVE  
AQLALKEARK EIKQLKQVID TVKNNLIDKD KGLQKYFVDI NIQNKKLETL LHSMEVAQNG MAKEDGTGES AGGSPARSLT  
RSSTYTKLSD PAVCGDRQPG DPSSGSAEDG AD SGFAAADD TLSRTDALEA SLLSSGVDC GTEETSLHSS FGLGPRFPAS  
NTYEKLLCGM EAGVQASCMQ ERAIQTDFVQ YQPDLDITILE KVTQAQVCGT DPESGDRCPD LDAHPSGPRD PNSAVVVTVG  
DELEAPEPIT RGPTPQRPGA NPNPGQSVSV VCPMEEEEEA AVAEKEPKSY WSRH

## General References

Lao G., et al. Neuron. 2000 25(1), 191-201.  
Boczan., et al. J Biol Chem. 2004 279(18), 18911-9.

## DATA

### SDS-PAGE



3ug by SDS-PAGE under reducing condition and visualized by coomassie blue stain.