

Recombinant human GRO alpha/CXCL1 protein

Catalog Number: CXC0901

PRODUCT INFORMATION

Expression system

E.coli

Domain

35-107aa

UniProt No.

P09341

NCBI Accession No.

NP_001502

Alternative Names

SCYB1, Neutrophil-activating protein 3, NAP-3, MGSA, Melanoma growth stimulatory activity, Growth-regulated alpha protein, GRO-alpha(1-73), GROA, GRO1 oncogene, GRO1, GRO, FSP, Fibroblast secretory protein, C-X-C motif chemokine ligand 1

PRODUCT SPECIFICATION

Molecular Weight

10.1 kDa (94aa) confirmed by MALDI-TOF (Molecular weight on SDS-PAGE will appear higher)

Concentration

1mg/ml (determined by absorbance at 280nm)

Formulation

Liquid in. 20mM Tris-HCl buffer (pH 8.0) containing 10% glycerol

Purity

> 90% by SDS-PAGE

Endotoxin level

< 1 EU per 1ug of protein (determined by LAL method)

Tag

His-Tag

Application

SDS-PAGE

Storage Condition

Can be stored at +2C to +8C for 1 week. For long term storage, aliquot and store at -20C to -80C. Avoid repeated freezing and thawing cycles.

BACKGROUND

Description

CXCL1/GROa is a growth factor for melanoma cells and a chemotaxin for neutrophils. Similar to other alpha chemokines, this protein is potent neutrophil attractant and activator and is also active toward basophils. In

Recombinant human GRO alpha/CXCL1 protein

Catalog Number: CXC0901

In addition, CXCL1 protein may be a therapeutic target as well as a diagnostic marker in ovarian cancer. Recombinant CXCL1 protein was expressed in *E. coli* and purified by using conventional chromatography techniques

Amino acid Sequence

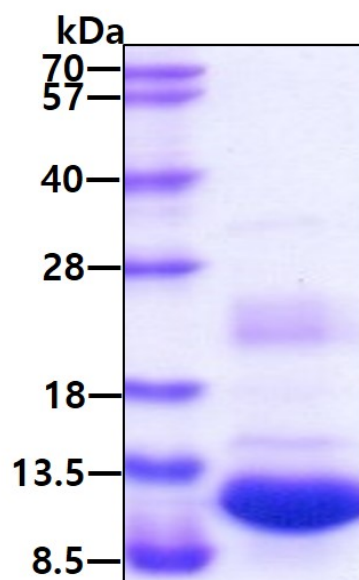
MGSSHHHHHH SGLVPRGSH MASVATELRC QCLQTLQGIH PKNIQSVNVK SPGPHCAQTE VIATLKNGRK ACLNPASPIV
KKIIEKMLNS DKSN

General References

- Kawanishi H, et al. (2008) Clin Cancer Res., 2579-87
- Yang HT, et al. (2008) Cell Signal, 375-80
- Yang G, et al. (2006) Proc Natl Acad Sci u S A, 16472-7

DATA

SDS-PAGE



3ug by SDS-PAGE under reducing condition and visualized by coomassie blue stain.