

# Recombinant human SF20/MYDGF protein

Catalog Number: SFT0904

## PRODUCT INFORMATION

---

### Expression system

E.coli

### Domain

33-173aa

### UniProt No.

Q969H8

### NCBI Accession No.

NP\_061980

### Alternative Names

Myeloid-derived growth factor, IL27, IL27w, Interleukin 27 working designation, C19orf10, R33729\_1, IL25, Stromal cell derived growth factor, SF20, IL-25

## PRODUCT SPECIFICATION

---

### Molecular Weight

18 kDa (162aa) confirmed by MALDI-TOF

### Concentration

1mg/ml (determined by Bradford assay)

### Formulation

Liquid in. 20mM Tris-HCl buffer (pH 8.0) containing 20% glycerol

### Purity

> 95% by SDS-PAGE

### Tag

His-Tag

### Application

SDS-PAGE

### Storage Condition

Can be stored at +2C to +8C for 1 week. For long term storage, aliquot and store at -20C to -80C. Avoid repeated freezing and thawing cycles.

## BACKGROUND

---

### Description

SF20/25, originally identified as a product of bone marrow-derived stromal cells, was previously thought to support proliferation of lymphoid cells and was designated as interleukin. However, this activity has not been reproducible and the function of this protein is currently unknown. Recombinant human SF20/IL25 protein, fused to His-tag at N-terminus, was expressed in E. coli and purified by using conventional chromatography techniques, after refolding of the isolated inclusion bodies in a renaturation buffer.

## Recombinant human SF20/MYDGF protein

Catalog Number: SFT0904

### Amino acid Sequence

<MGSSHHHHHH SSGLVPRGSH M>SEPTTVAFD VRPGGVVHSF SHNVGPGDKY TCMFTYASQG GTNEQWQMSL  
GTSEDHQHFT CTIWRPQGKS YLYFTQFKAE VRGAEIEYAM AYSKAAFERE SDVPLKTEEF EVTKTAVAGR PGAFKAELSK  
LVIVAKASRT EL

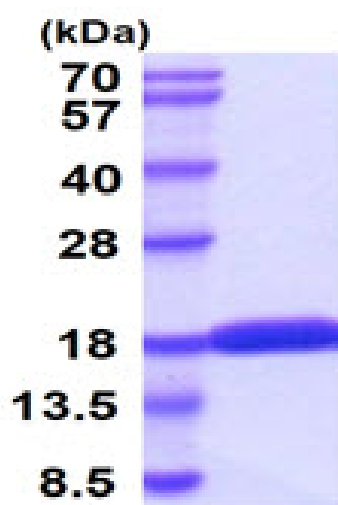
### General References

Weiler T., et al. (2007) Arthritis Res Ther. 9, R30.  
Tulin E.E., et al. (2001) J. Immunol.167(11):6338-47

## DATA

---

### SDS-PAGE



3ug by SDS-PAGE under reducing condition and visualized by coomassie blue stain.

15% SDS-PAGE (3ug)