

Recombinant human GRO beta/CXCL2 protein

Catalog Number: ATGP0299

PRODUCT INFORMATION

Expression system

E.coli

Domain

35-107aa

UniProt No.

P19875

NCBI Accession No.

NP_002080

Alternative Names

C-X-C motif chemokine ligand 2, C-X-C motif chemokine 2, Growth-regulated protein beta, Gro-beta, GRO2, GROB, MIP2A, SCYB2, GRO2 oncogene, Macrophage inflammatory protein 2-alpha, MIP2-alpha, MGSA-b, CINC-2a

PRODUCT SPECIFICATION

Molecular Weight

10.1 kDa (94aa) confirmed by MALDI-TOF

Concentration

1mg/ml (determined by BCA assay)

Formulation

Liquid in. 20mM Tris-HCl buffer (pH 8.0)

Purity

> 90% by SDS-PAGE

Endotoxin level

< 1 EU per 1ug of protein (determined by LAL method)

Tag

His-Tag

Application

SDS-PAGE

Storage Condition

Can be stored at +2C to +8C for 1 week. For long term storage, aliquot and store at -20C to -80C. Avoid repeated freezing and thawing cycles.

BACKGROUND

Description

CXCL2 is a small cytokine belonging to the CXC chemokine family that is also known as Chemokine (C-X-C motif) ligand 2, and macrophage inflammatory protein 2-alpha (MIP2-alpha). CXCL2 is secreted by activated monocytes, neutrophils and macrophages and expressed at sites of inflammation. CXCL2 is chemotactic for

Recombinant human GRO beta/CXCL2 protein

Catalog Number: ATGP0299

polymorphonuclear leukocytes and hematopoietic stem cells and suppresses hematopoietic progenitor cell proliferation. Recombinant human CXCL2 protein, fused to His-tag at N-terminus, was expressed in E. coli and purified by using conventional chromatography.

Amino acid Sequence

<MGSSHHHHHH SSGLVPRGSH M>APLATELRC QCLQTLQGIH LKNIQSVKVK SPGPHCAQTE VIATLKNGQK
ACLNPASPMV KKIIKMLKN GKSN

General References

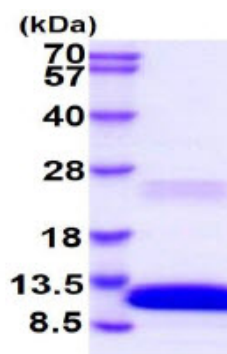
Wolpe SD., et al. (1989). Proc Natl Acad Sci U S A. 86(2):612-6.

Jerva LF., et al. (1997). Protein Sci. 6(8):1643-52.

Pelus LM., et al. (2006). Exp Hematol. 34(8):1010-20.

DATA

SDS-PAGE



15% SDS-PAGE (3ug)

3ug by SDS-PAGE under reducing condition and visualized by coomassie blue stain.