

Recombinant human HOMER1 protein

Catalog Number: ATGP0313

PRODUCT INFORMATION

Expression system

E.coli

Domain

1-354aa

UniProt No.

Q86YM7

NCBI Accession No.

NP_004263

Alternative Names

HOMER, Homer protein homolog 1, HOMER1, HOMER1A, HOMER1B, HOMER1C, Neuronal immediate early gene, SYN47, Ves 1

PRODUCT SPECIFICATION

Molecular Weight

44.5 kDa (391aa) confirmed by MALDI-TOF

Concentration

1mg/ml (determined by Bradford assay)

Formulation

Liquid in. 20mM Tris-HCl buffer (pH 8.0) containing 0.1M NaCl 20% glycerol, and 1mM DTT

Purity

> 90% by SDS-PAGE

Tag

His-Tag

Application

SDS-PAGE

Storage Condition

Can be stored at +2C to +8C for 1 week. For long term storage, aliquot and store at -20C to -80C. Avoid repeated freezing and thawing cycles.

BACKGROUND

Description

Homer 1 (Homer protein homolog 1) belongs to Homer family of proteins that regulate signal transduction through, and the trafficking of, glutamate receptors, as well as maintain and regulate extracellular glutamate levels in corticolimbic brain regions. The Homer 1 is enriched at excitatory synapses and binds group 1 metabotropic glutamate receptors (mGluRs). Recombinant Homer 1 protein was expressed in E. coli and purified by using conventional chromatography techniques.

Recombinant human HOMER1 protein

Catalog Number: ATGP0313

Amino acid Sequence

MRGSHHHHHH GMASMTGGGQ MGRDLYDDDD KDRWGSHMGE QPIFSTRAHV FQIDPNTKKN WVPTSKHAVT
VSYFYDSTRN VYRIISLDGS KAIINSTITP NMTFTKTSQK FGQWADSRAN TVYGLGFSSE HHLSKFAEFK QEFKEAARLA
KEKSQEKMEL TSTPSQESAG GDLQSPLTPE SINGTDDERT PDVTQNSEPR AEPTQNALPF SHSSAISKHW EAEATLTKGN
NAKLTAALLE STANVKQWKQ QLAAYQEEAE RLHKRVTELE CVSSQANAVH THKTELNQTI QELEETLKLK EEEIERLKQE
IDNARELQEQ RDSLQKQLQE VEIRNKDLEG QLSDLQRLK KSNQEQEAFR NNLKTLLEIL DGKIFELTEL RDNLAKLLEC S

General References

Szumliński KK., et al. (2008) *Biochem Pharmacol.* 75(1):112-133.
Roche KW., et al. (1999) *J Biol Chem.* 274(36):25953-7.

DATA

SDS-PAGE

(kDa)

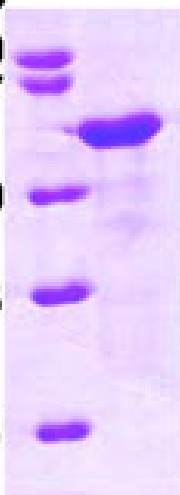
70

57

40

28

18



3ug by SDS-PAGE under reducing condition and visualized by coomassie blue stain.

15% SDS-PAGE (3ug)