

Recombinant human Calumenin protein

Catalog Number: ATGP0315

PRODUCT INFORMATION

Expression system

E.coli

Domain

20-315aa

UniProt No.

O43852

NCBI Accession No.

NP_001210

Alternative Names

Calumenin, CALu, Crocalbin, FLJ90608, IEF SSP 9302,

PRODUCT SPECIFICATION

Molecular Weight

37.2 kDa (317aa) confirmed by MALDI-TOF

Concentration

1mg/ml (determined by Bradford assay)

Formulation

Liquid in. 20mM Tris-HCl buffer (pH 8.0) containing 10% glycerol

Purity

> 90% by SDS-PAGE

Tag

His-Tag

Application

SDS-PAGE

Storage Condition

Can be stored at +2C to +8C for 1 week. For long term storage, aliquot and store at -20C to -80C. Avoid repeated freezing and thawing cycles.

BACKGROUND

Description

Calumenin, also known as CALu, is a multiple EF-hand calcium-binding protein located in endoplasmic reticulum (ER) and sarcoplasmic reticulum (SR) of mammalian tissues. This protein binds 7 calcium ions with a low affinity and is involved in such ER functions as protein folding and sorting. Recombinant human Calumenin protein, fused to His-tag at N-terminus, was expressed in E. coli and purified by using conventional chromatography.

Amino acid Sequence

<MGSSHHHHHH SGLVPRGSH> MKPTEKKDRV HHEPQLSDKV HNDAQSFDYD HDAFLGAEAA KTFDQLTPEE

Recombinant human Calumenin protein

Catalog Number: ATGP0315

SKERLGKIVS KIDGDKDGFV TVDELKDWIK FAQKRWIYED VERQWKGHDL NEDGLVSWEE YKNATYGYVL DDPDPDDGFN
YKQMMVRDER RFKMADKDGD LIATKEEFTA FLHPEEYDYM KDIVVQETME DIDKNADGFI DLEEYIGDMY SHDGNTDEPE
WVKTEREQFV EFRDKNRDGK MDKEETKDWI LPSDYDHAEA EARHLVYESD QNKDGGKLTKE EIVDKYDLFV GSQATDFGEA
LVRHDEF

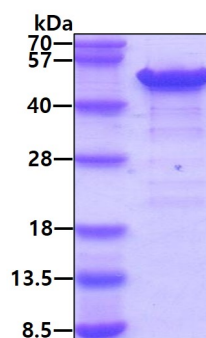
General References

Yabe D., et al. (1997) J Biol Chem. 272(29):18232-9.

Vorum H., et al. (1998) Biochim Biophys Acta. 1386(1):121-31.

DATA

SDS-PAGE



3ug by SDS-PAGE under reducing condition and visualized by coomassie blue stain.